

NOTES:

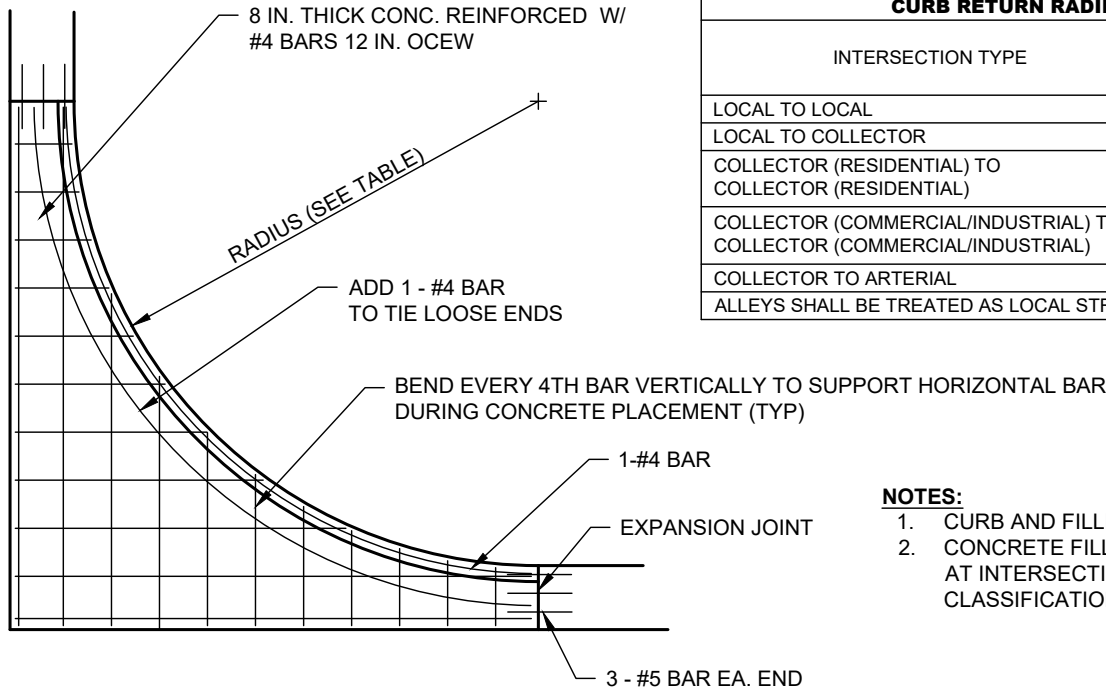
- IF FILLETS ARE NOT EXISTING, VALLEY AND FILLETS SHALL EACH BE MONOLITHIC WHEN CURB AND GUTTER IS CALLED FOR.
- UPSTREAM RETURN IN VALLEY SHALL BE CONSTRUCTED SO WATER WILL NOT POND.
- IF RUNOFF IS BEING CONVEYED ACROSS THE STREET AT AN INTERSECTION, A STANDARD VALLEY SHALL BE REQUIRED.
- FOR NEW OR RECONSTRUCTION OF PAVEMENT, SUBSTITUTE TOP 8 IN. OF PAVEMENT STRUCTURE PER PLANS WITH 8 IN. 3,000 PSI CONCRETE.

FOR PLACEMENT OF STANDARD CONCRETE VALLEY AND FILLET IN EXISTING PAVEMENT			
P.I. OF SUBGRADE	PORTLAND CEMENT CONCRETE	BASE	SUBGRADE
P.I. ≤ 20	8 IN.	4 IN. CTB ^{a,b}	COMPACTED ^b
20 < P.I. < 40	8 IN.	-	6 IN. LSS ^c
P.I. ≥ 40	8 IN.	-	8 IN. LSS ^c

- SUBSTITUTE: 4 IN. RECYCLED CRUSHED CONCRETE (TXDOT STANDARD SPECIFICATIONS FOR CONSTRUCTION ITEM 247 FLEXIBLE BASE TYPE D, GRADE 1-2, EXCLUDING TYPE A MATERIALS, WITH A MINIMUM P.I. OF 4).
- COMPACTED TO 95% DENSITY OF MAXIMUM DENSITY PER TEST PROCEDURE TEX-114-E.
- LIME STABILIZED SUBGRADE

STANDARD CONCRETE VALLEY

(NO SCALE)



CURB RETURN RADII CRITERIA	
INTERSECTION TYPE	MINIMUM CURB RETURN RADIUS (FEET)
LOCAL TO LOCAL	20
LOCAL TO COLLECTOR	20
COLLECTOR (RESIDENTIAL) TO COLLECTOR (RESIDENTIAL)	25
COLLECTOR (COMMERCIAL/INDUSTRIAL) TO COLLECTOR (COMMERCIAL/INDUSTRIAL)	30
COLLECTOR TO ARTERIAL	30
ALLEYS SHALL BE TREATED AS LOCAL STREETS	

NOTES:

- CURB AND FILLET SHALL BE MONOLITHIC.
- CONCRETE FILLETS SHALL BE REQUIRED AT INTERSECTION CORNER OF ALL STREET CLASSIFICATIONS.

CONCRETE CURB & GUTTER FILLET

(NO SCALE)



ENGINEERING DIVISION

DISCLAIMER: THE USE OF THIS STANDARD IS GOVERNED BY THE "TEXAS ENGINEERING PRACTICE ACT". NO WARRANTY OF ANY KIND IS MADE BY THE CITY OF WACO FOR ANY PURPOSE WHATSOEVER. THE CITY OF WACO ASSUMES NO RESPONSIBILITY FOR THE CONVERSION OF THIS STANDARD TO OTHER FORMATS OR FOR INCORRECT RESULTS OR DAMAGES RESULTING FROM ITS USE.

REVISIONS			
NO.	COMMENTS	BY	DATE
1	REVISE WIDTH OF VALLEY & CORRESPONDING LOCATION OF FLOW LINE; ADD NOTE C SUBGRADE	MZ	11/15/2024
##	DESCRIPTION	FL	MM/DD/YYYY

DATE
01/01/2024

ST-19