

Waco MPO Public Information Meeting

Monday, January 29, 2024
5:30 P.M.



Welcome!

Access Meeting Materials on Your Device

Scan QR code or visit
link below



<https://www.waco-texas.com/Departments/Metropolitan-Planning-Organization/Meetings/01.29.24-PC>



Agenda

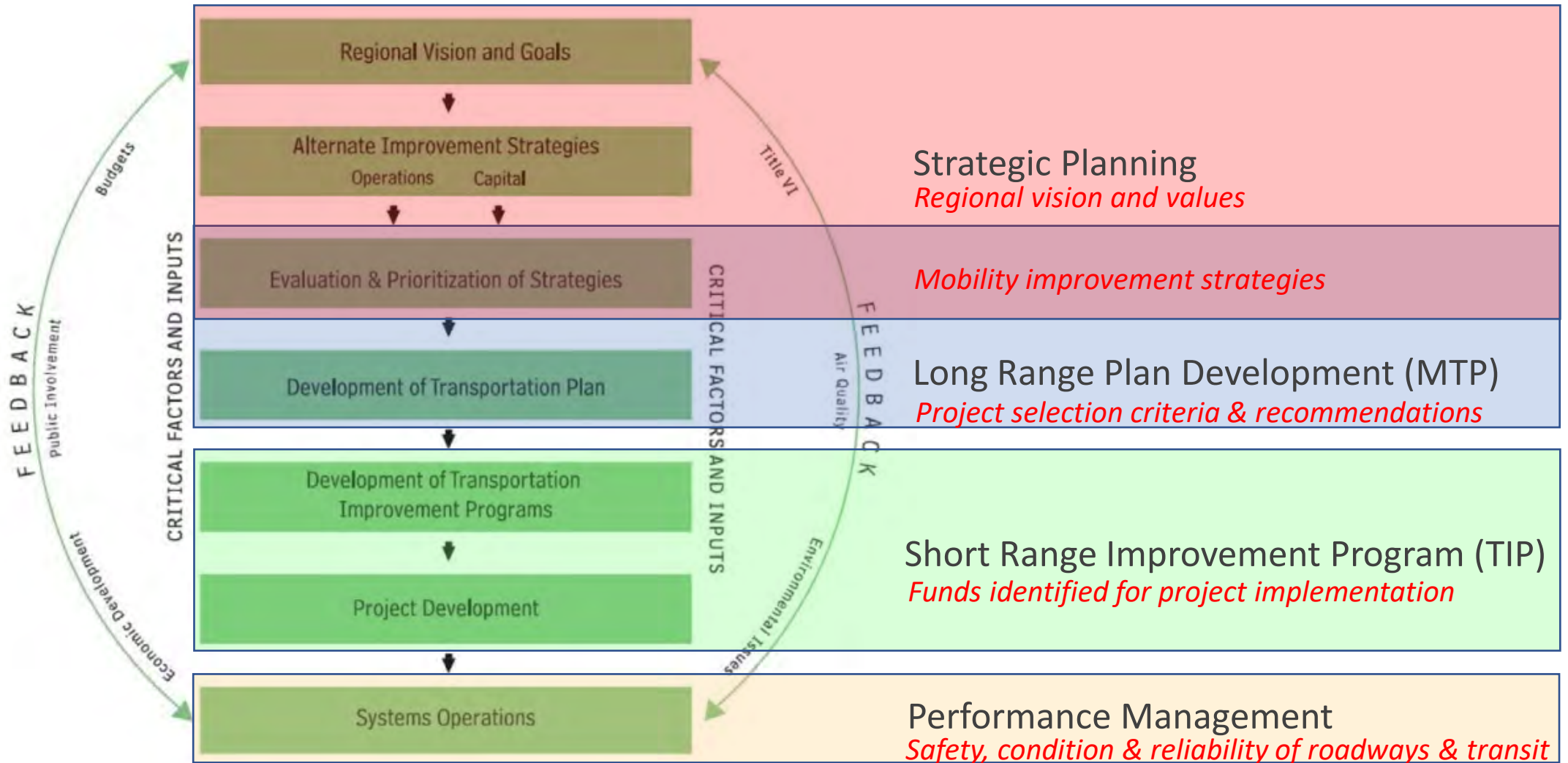
- What is the Waco MPO?
- Roadway Safety Targets
- Public Transportation Safety Targets
- Public Comment Opportunities
- Questions & Answers

What is the Metropolitan Planning Organization and what is its role?

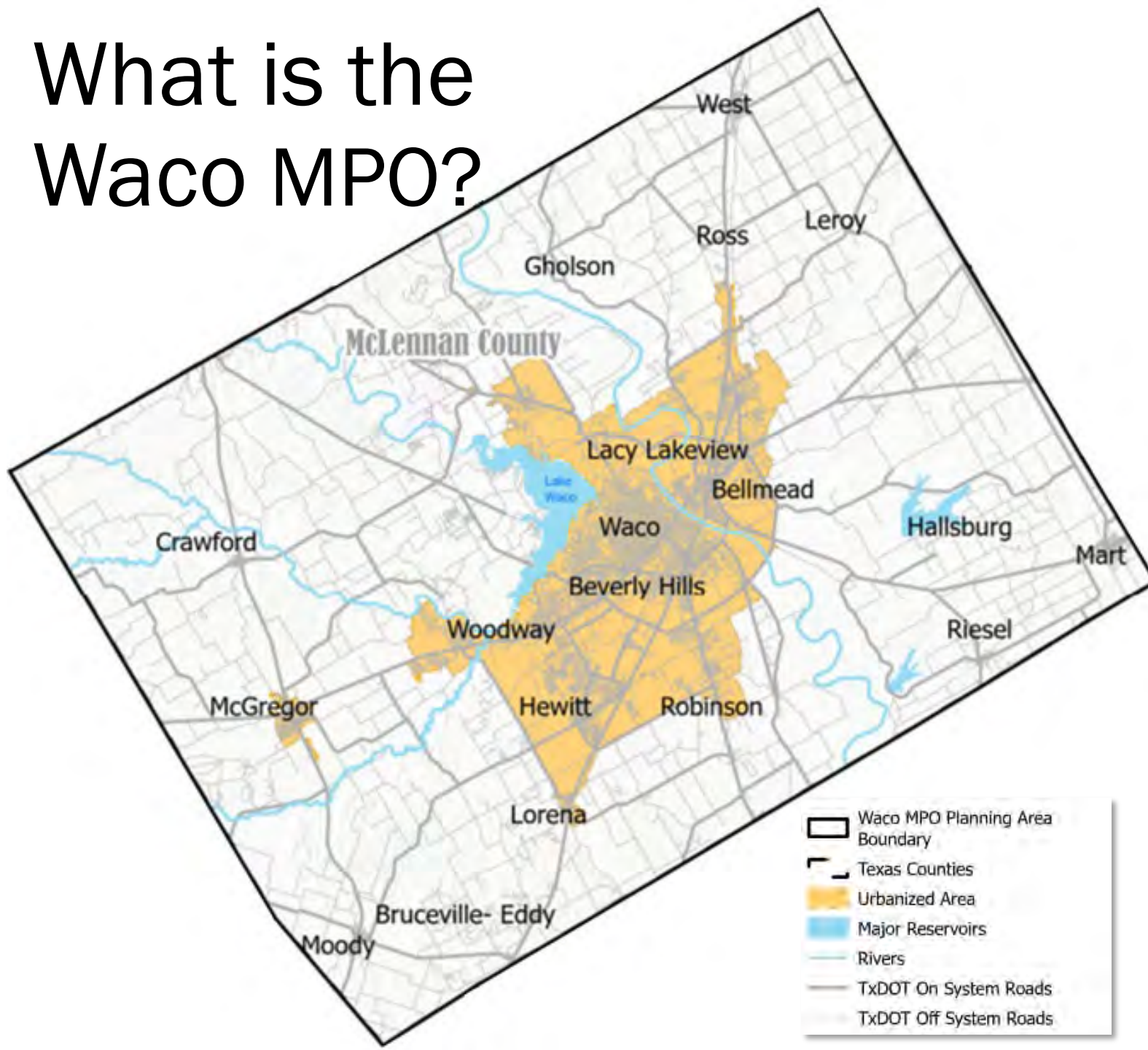
- Provides local input into long term, regional transportation decisions
- Prioritizes regionally significant projects with realistic funding strategies
- Decides how federal highway and transit funds are to be used within the Waco Region and assist local governments and TxDOT in identifying priorities
- Guides how the future transportation network should look and function for all users



Waco MPO Transportation Planning Process



What is the Waco MPO?



- Required for urban areas > 50,000 population
- Coordination and consensus building role to plan and fund transportation projects
- Governed by 20-member Policy Board
- Informed by 19-member Technical Advisory Committee + four workgroups
- Waco Metropolitan Area includes all of McLennan County



Roadway Safety

Transportation System Performance Targets for 2024



Roadway Safety Is a Significant Public Health Concern

- People use roads and sidewalks to get to work, school, stores, and home but not every trip is without incident
- The World Health Organization estimates that motor vehicle crashes kill more than 1 million people around the world each year and seriously injure more than 20 million
- These crashes affect all road users, from vehicle drivers and passengers to pedestrians, bicyclists, and transit users
- Public agencies in the US work to ensure that people arrive at their destinations without incident



How can public agencies reduce crashes?

Measure the safety and severity of crashes

Understand the factors that cause roadway accidents, from *infrastructure* to *vehicle design* to *human behavior*

Recommend practices to reduce the chances of crashes using all currently available tools, knowledge, and technology



Measuring & Prioritizing Roadway Safety

- Safety professionals measure road safety by the number, rate & severity of crashes (FAST Act)
- Set performance targets to minimize the frequency of crashes
- Identify locations with demonstrated history of crashes
- Prioritize funding for safety improvements

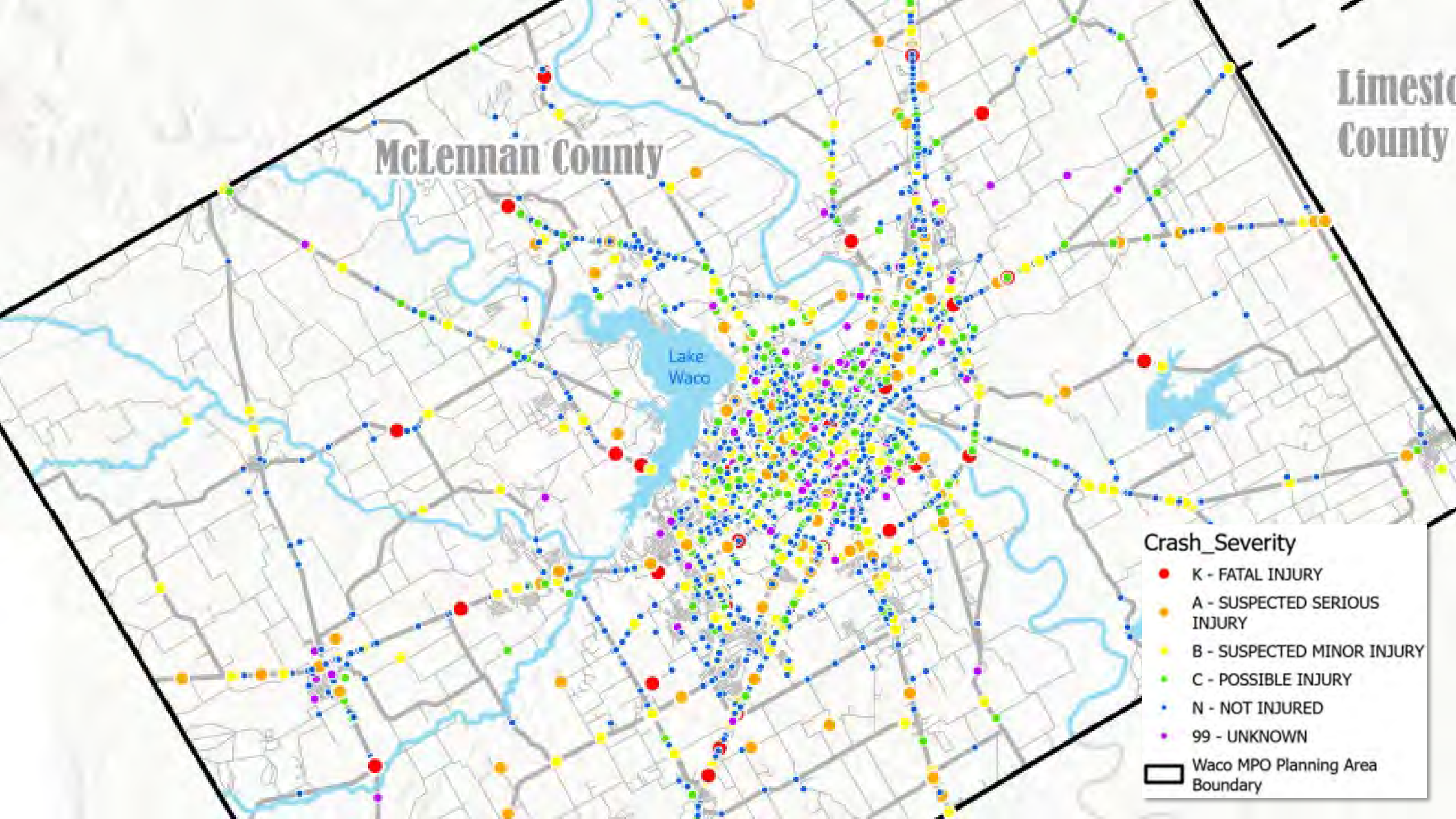
TxDOT's Performance Measures

- Number of Fatalities
- Fatalities per 100 million vehicle miles traveled
- Number of serious injuries
- Serious injuries per 100 million vehicle miles traveled
- Number of non-motorized fatalities & non-motorized serious injuries
- Systems approach resulting in system-wide outcomes



TxDOT Statewide 2024 5-Year Average Roadway Safety Performance Targets

	Number of Fatalities	Rate of Fatalities*	Number of Serious Injuries	Serious Injury Rate*	Non-Motorized Fatalities & Serious Injuries
2020	3,874	1.49	14,659	5.63	2,206
2021	4,486	1.70	19,434	7.35	2,628
2022	3,272	1.25	17,539	6.70	2,321
2023	3,159	1.2	17,819	6.77	2,340
2024 Target	3,046	1.14	18,242	6.77	2,360
2023 Target as 5-yr Average	3,682	1.38	17,062 [❖]	6.39 [❖]	2,357 [❖]
2024 Target as 5-yr Average	3,567	1.36	17,539	6.64	2,371



Proposed McLennan County 2024 5-Year Average Roadway Safety Performance Targets

	Number of Fatalities	Rate of Fatalities*	Number of Serious Injuries	Serious Injury Rate*	Non-Motorized Fatalities & Serious Injuries
2020	34	1.24	266	6.64	29
2021	36	1.28	385	9.18	40
2022	41	1.40	282	7.05	32
2023	30	1.00	263	8.79	26
2024 Target	29	0.95	252	8.30	26
2024 Target as 5-yr Average	34	1.174	293	8.088	30.6

How we build roadways impacts the safety of users

Environmental Factors that Influence Safety

- Location of Conflict (near misses) & Avoidance Maneuvers
- Visibility
- Traffic Volume
- Infrastructure
 - Bike lane, sidewalk, crosswalk
 - Traffic/Stop Signs
 - Crossing Guard Presence
 - Speed Bump
- Land Use



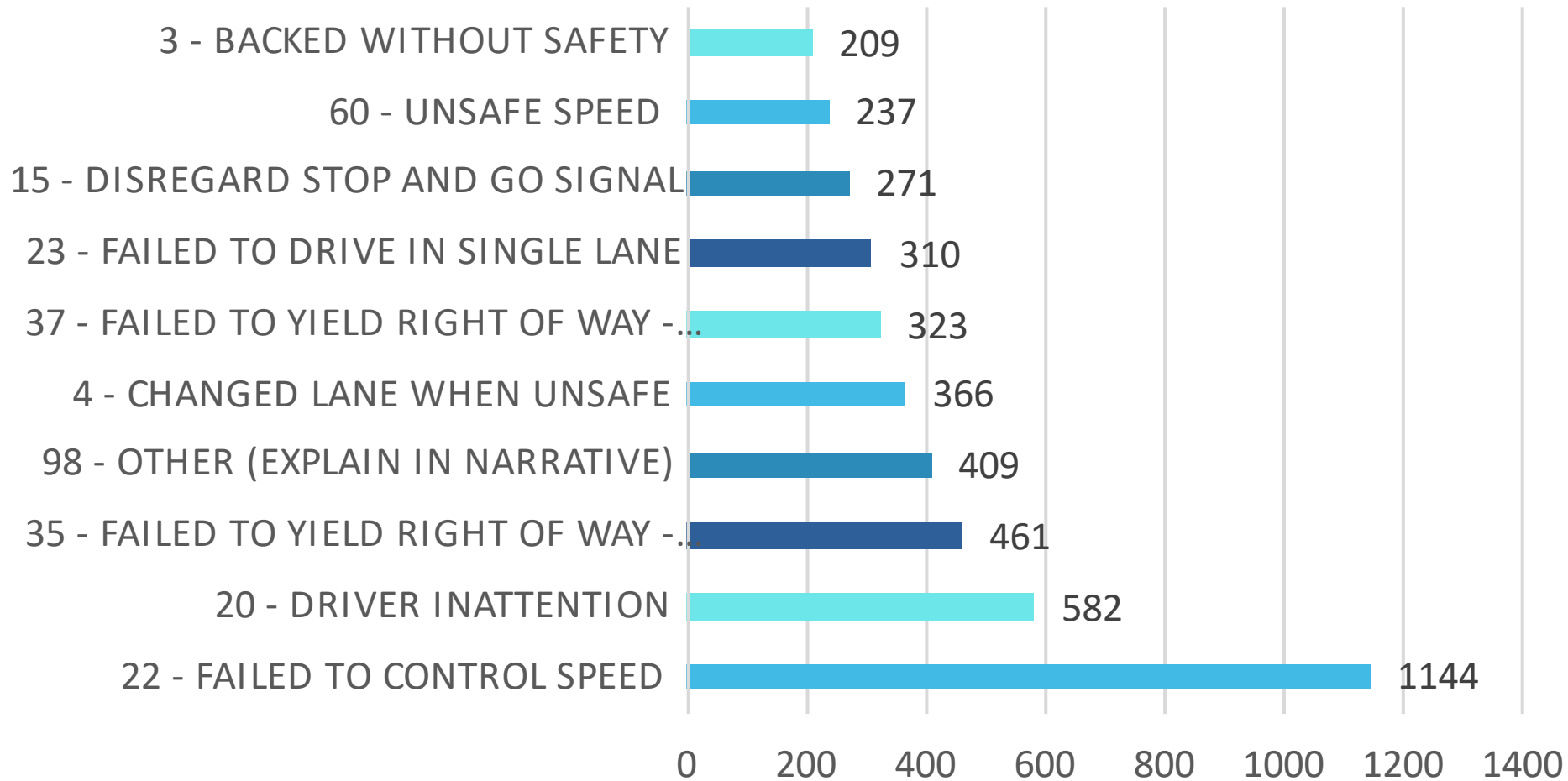
Perceived vs Objective Roadway Safety

Objective traffic safety (Collisions involving children)

		Unsafe/ dangerous	No correlation	Safer/ less dangerous
Perceived traffic safety	Unsafe/ dangerous	<ul style="list-style-type: none"> • High vehicle/ traffic speed • High traffic volume • Near schools 	<ul style="list-style-type: none"> • High intersection density • Street parking 	
	No correlation	<ul style="list-style-type: none"> • High population density 	<ul style="list-style-type: none"> • Road/ Network density • Commercial, Residential, Mixed and Park land use 	
	Safer/ less dangerous	<ul style="list-style-type: none"> • Crossing guards 		<ul style="list-style-type: none"> • Sidewalk

Agree

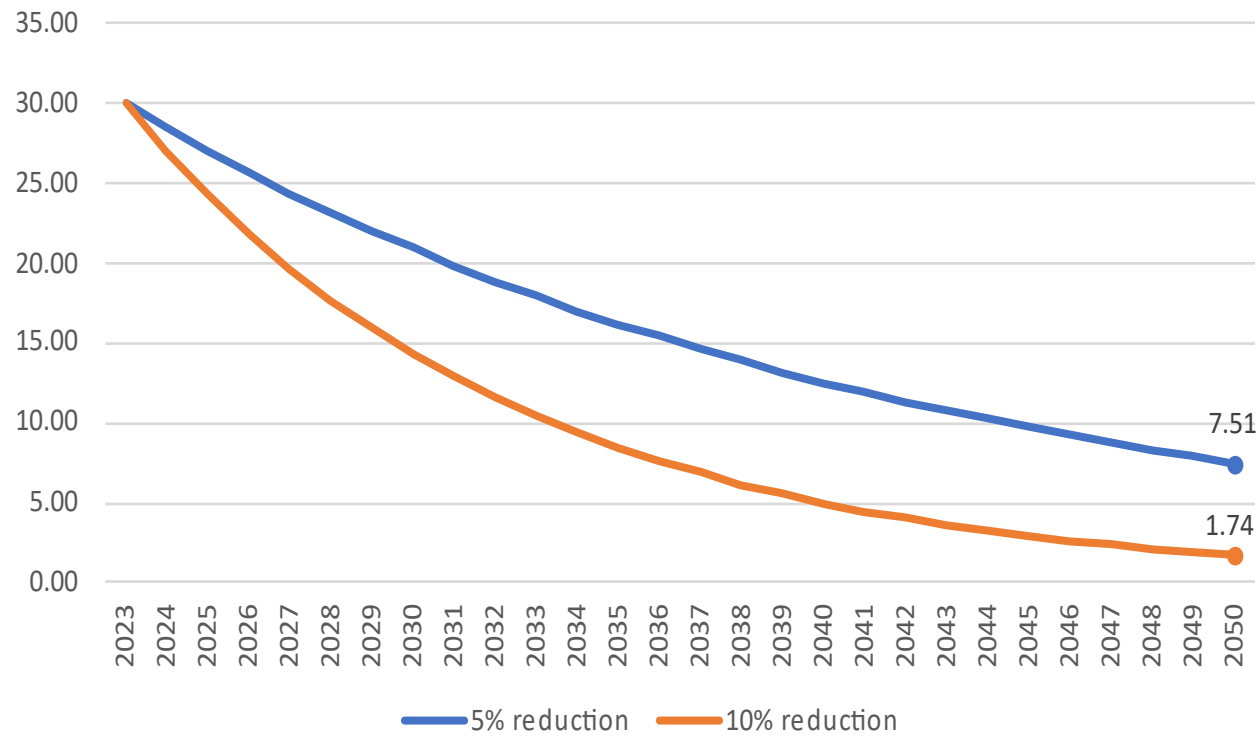
Top 10 Contributing Factors For All 2022 Crashes



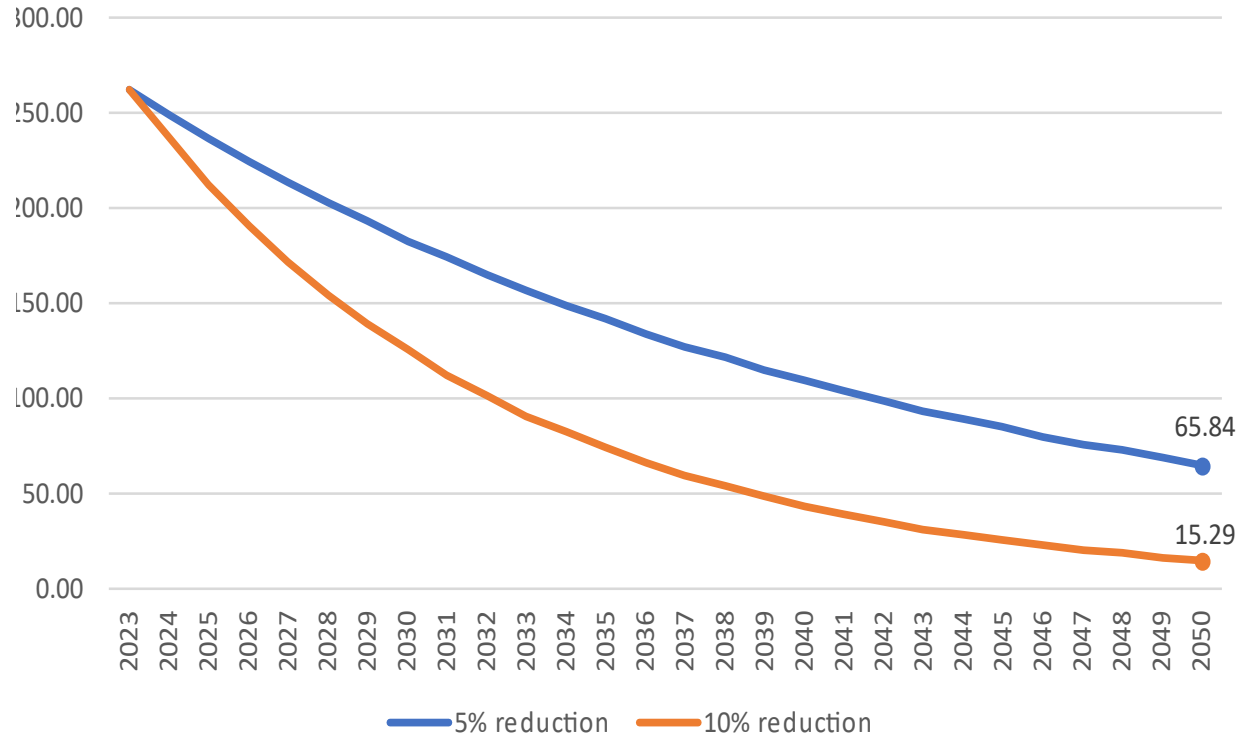
- Speed
- Land Use/
Neighborhood
Design
- Drugs and
Drinking
- Driver
inattention is
too broad

Vizion Zero Scenario

Hypothetical 2050 Scenarios on Fatalities



Hypothetical 2050 Scenarios on Serious Injuries



Supporting TxDOT's Statewide Roadway Safety Targets

- What will it take to achieve zero fatalities by 2050?
- Need to tackle this issue nationally, statewide, and regionally/locally
- Using engineering, policies, programs, education campaigns





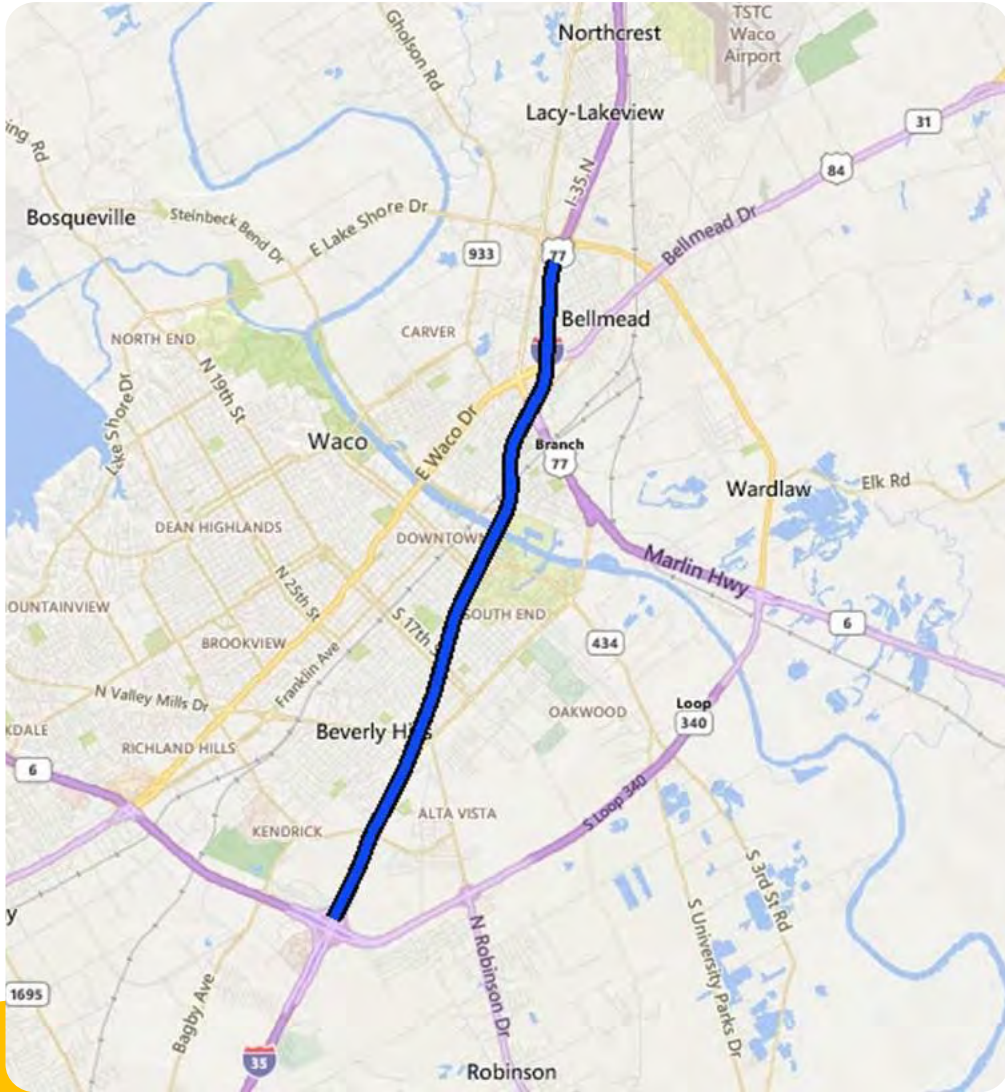
Focus on System-Wide Outcomes

Examples of Waco MPO Efforts to Support Statewide Targets

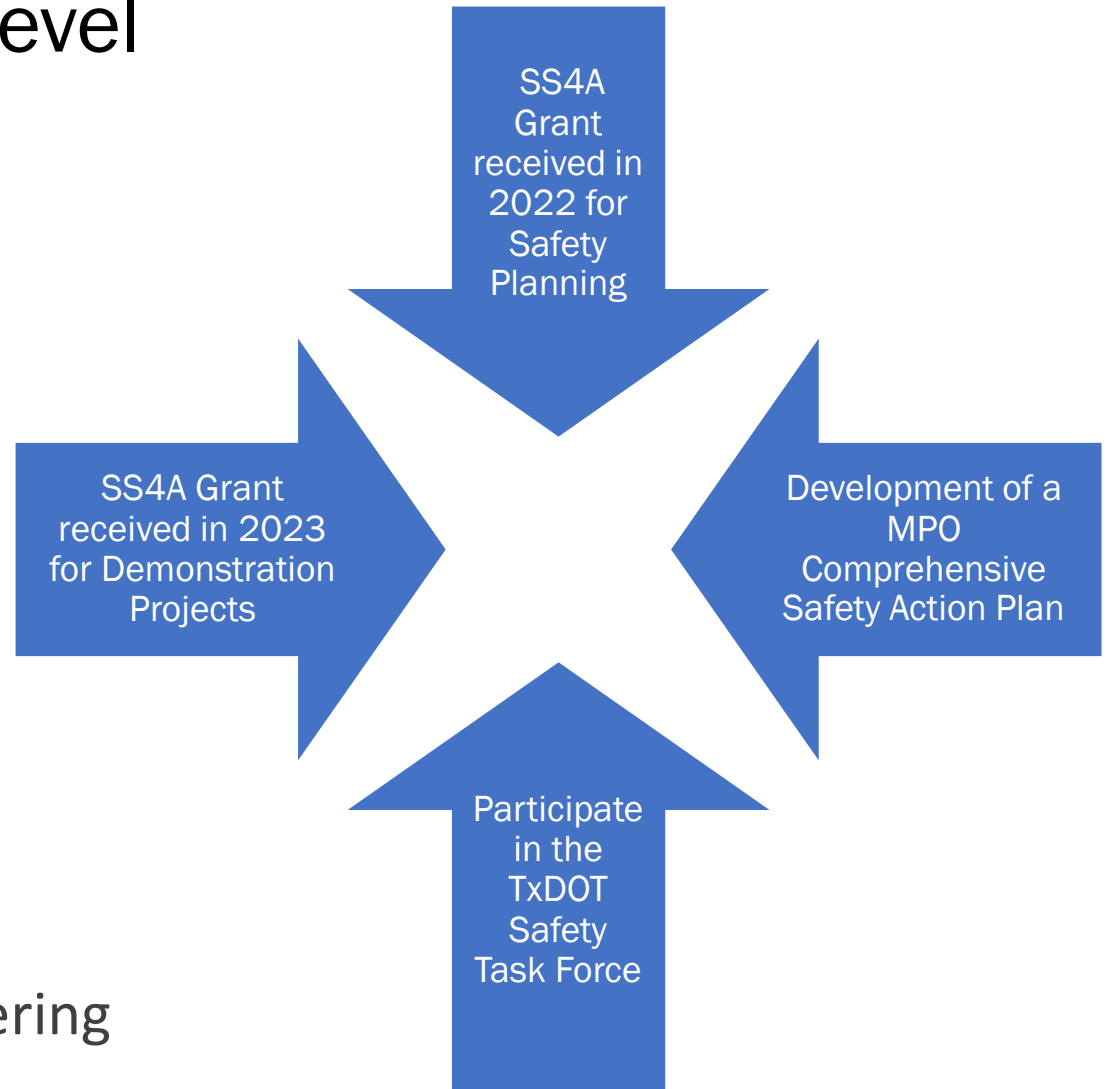
Develop project selection criteria for MTP 2050 aimed at reducing fatalities and serious injuries for all modes

Examine modal choices, travel time, land use connections, crash hot spots, etc.

Plan and program projects in MTP and TIP that contribute to accomplishment of statewide targets.



Examples of Waco MPO Efforts to affect safety at local level



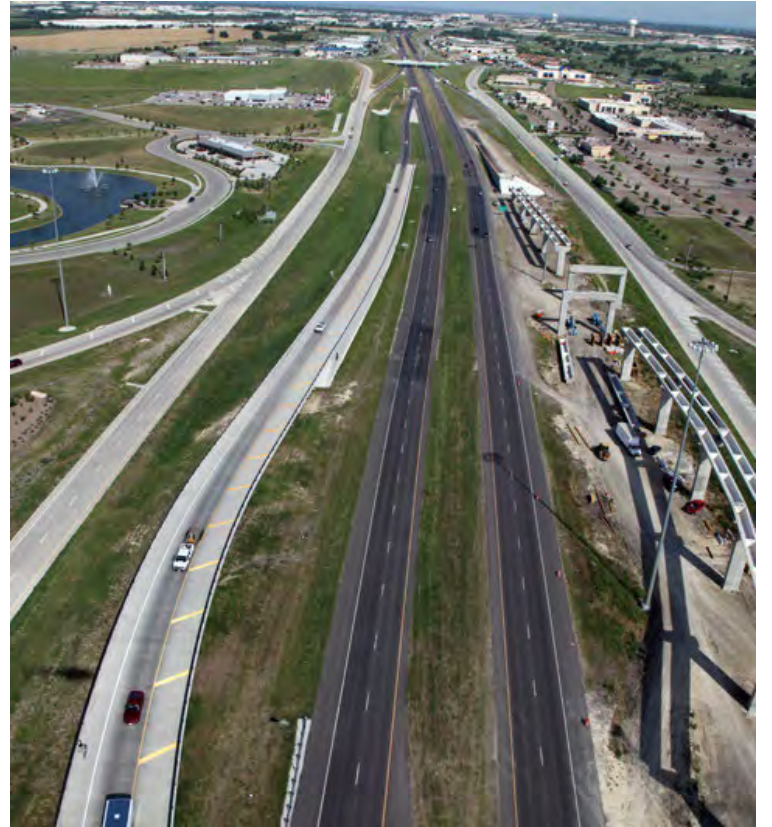
Focus on Location Specific Design & Engineering

How can the Waco MPO help TxDOT to maintain a safe roadway network?

By linking investment priorities to TxDOT's safety performance goals

- The MPO can work to understand local safety-related conditions that affect roadways in our region
- The MPO can include projects & strategies in its plans and programs to aid the state in achieving its safety targets





Public Transportation Safety

Proposed Annual Performance Targets

Public Transportation is one of the safest ways to travel

- Public transportation is 10 times safer per mile than traveling by car
- People use public transportation to get to work, school, stores, and home but not every trip is without incident
- The Texas Department of Transportation estimates that public transit vehicle crashes kill approximately 16 people in Texas each year and injure more than 700 (excludes school bus incidents)
- Public agencies in the US work to ensure that people using public transportation arrive at their destinations without incident





How can public agencies keep public transportation passengers and operators safe?

Measure the safety and severity of crashes

Understand the factors that cause public transportation accidents, from *mechanical failures* to *human behavior* to *infrastructure*

Recommend practices to effectively and proactively manage internal safety risks

Better predict & reduce the frequency of safety events



Measuring & Prioritizing Public Transportation Safety

- Safety professionals measure public transportation safety by the number, rate & severity of crashes, & by mechanical failures (FAST Act)
- Set performance targets to minimize the frequency of crashes & mechanical issues
- Adjust vehicle maintenance & driver training programs
- Prioritize funding for safety improvements

Waco Transit's Performance Measures

- Number of Fatalities
- Fatalities per vehicle revenue miles traveled
- Number of serious injuries
- Serious injuries per vehicle revenue miles traveled
- Number of safety events
- Number of major mechanical failures
- Systems approach resulting in system-wide outcomes



Adopted 2024 PTASP Safety Targets

Waco Transit System, Inc.

Fixed Route (Bus) Safety Performance Targets

Measure	Baseline	Target
Fatalities	0	0
Rate of Fatalities*	0%	0%
Injuries	3.0	2.6
Rate of Injuries*	0.00039%	0%
Safety Events	3.0	2.2
Rate of Safety Events*	0.00039%	0%
System Reliability	32,592	33,980

Demand Response Safety Performance Targets

Measure	Baseline	Target
Fatalities	0	0
Rate of Fatalities*	0%	0%
Injuries	4	1
Rate of Injuries*	0.00052%	0%
Safety Events	3.8	2.8
Rate of Safety Events*	0.00061%	0%
System Reliability	59,324	39,920

*Rate = total number for the year/total revenue vehicle miles traveled

How can the Waco MPO help Waco Transit to maintain a safe transit network?

By linking investment priorities to Waco Transit's safety performance goals

- The MPO can work to understand local safety-related conditions that affect transit
- The MPO can include projects & strategies in its plans and programs to aid the transit agency in achieving its safety targets





Public Comment Opportunities

Transportation System Performance Targets for 2024



2024 Safety Targets *Public Engagement Schedule*

- Solicitation of Comments – January 29 – February 7, 2024
 - Submit comments online at <https://www.waco-texas.com/Departments/Metropolitan-Planning-Organization/Community-Engagement>
- Public Informational Meeting – January 29, 2024 –5:30 PM
- TAC Review / Recommendation – February 1, 2024
- Public Hearing / Policy Board Action – February 15, 2024

What Are Your Thoughts?

• Questions? Comments? Ideas?

• Contact Us!

- Phone: (254)750-5650
- E-Mail: mpo@wacotx.gov
- Facebook: @cityofwacotx
- LinkedIn



- Comments accepted in any language
- Comment form is accessible on the MPO website in the *Community Engagement* section





Contact Us

- Phone: (254) 750-5650
- Email:
 - mpo@wacotx.gov
- Website:
 - <https://www.waco-texas.com/Departments/Metropolitan-Planning-Organization>



Waco MPO Public Information Meeting

Monday, January 29, 2024
5:30 P.M.



Title

- Words

Title



Words



Words



Words



Words

