

Solid Waste Facilities Update

City of Waco

May 21, 2024



Kody Petillo, Director of Solid Waste

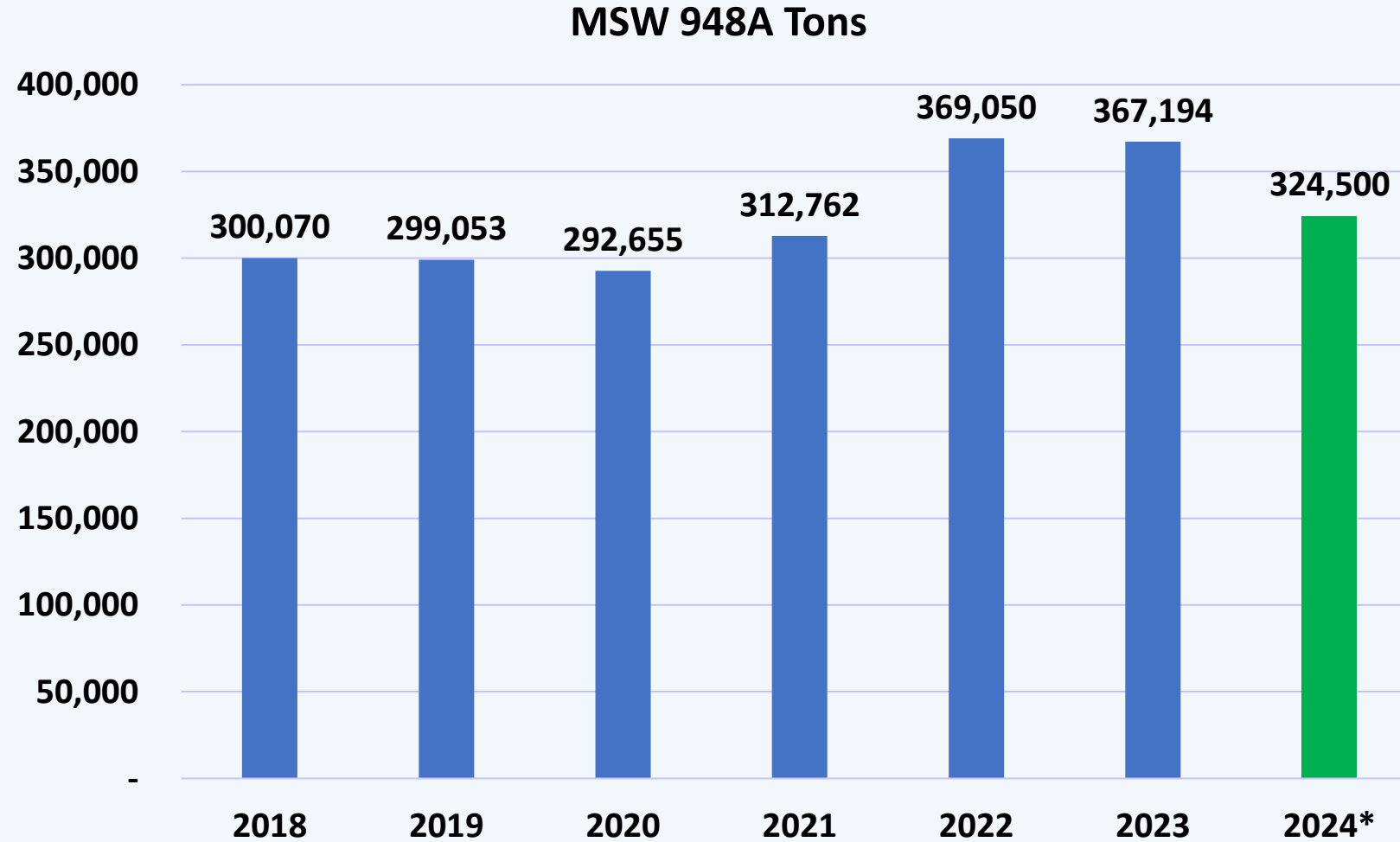
Solid Waste Facilities Update

Overview

- MSW 948A Landfill Capacity
- MSW 2400 Progress
- Transfer Station Progress

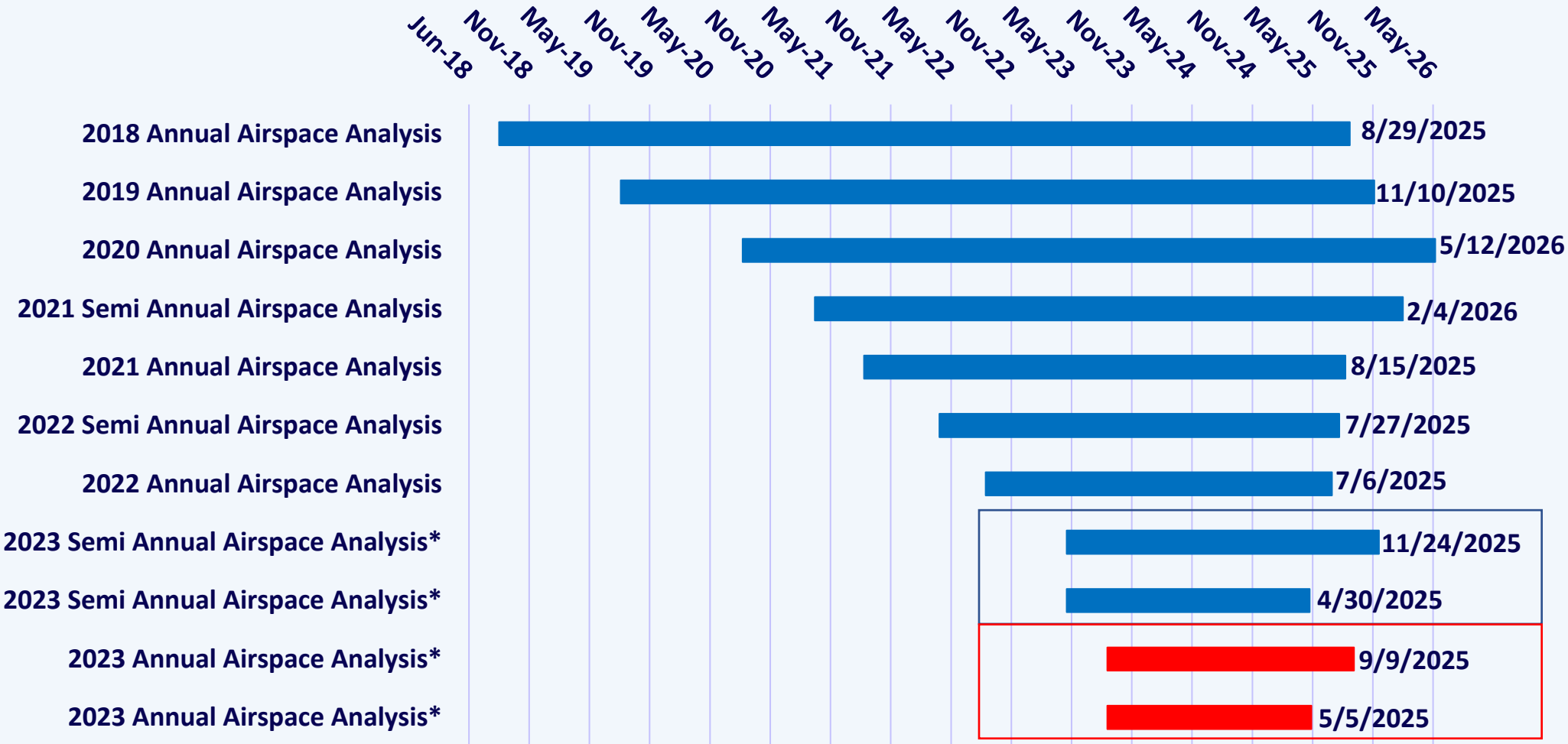
MSW 948A

MSW 948A Tonnage Trends



* 2024 tonnage is 8 months actual, and 4 months projected

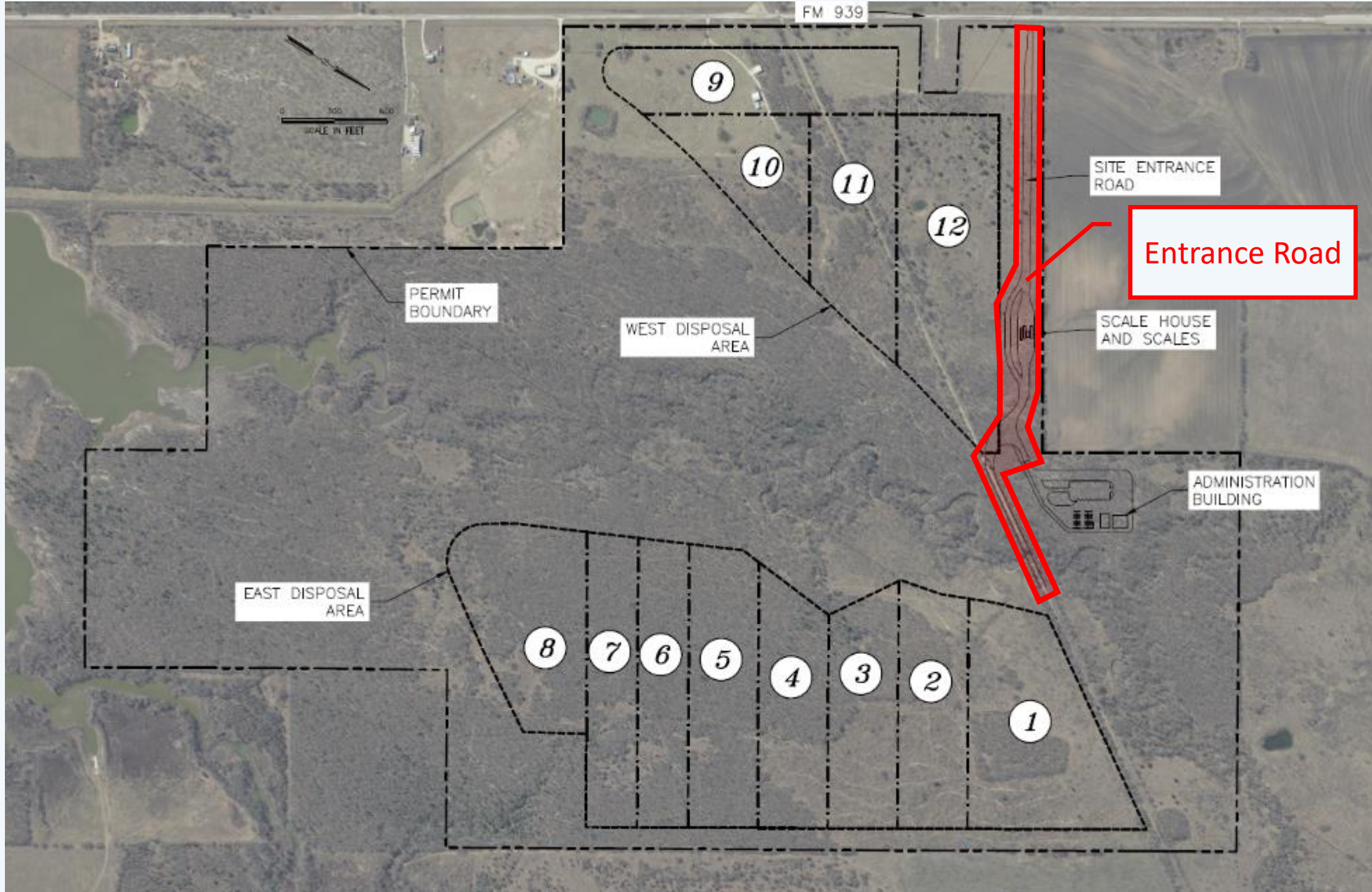
MSW 948A Airspace Capacity



*2 SCENARIOS BASED ON DIFFERENT
COMPACTION RATES

MSW 2400

MSW 2400 Site Layout

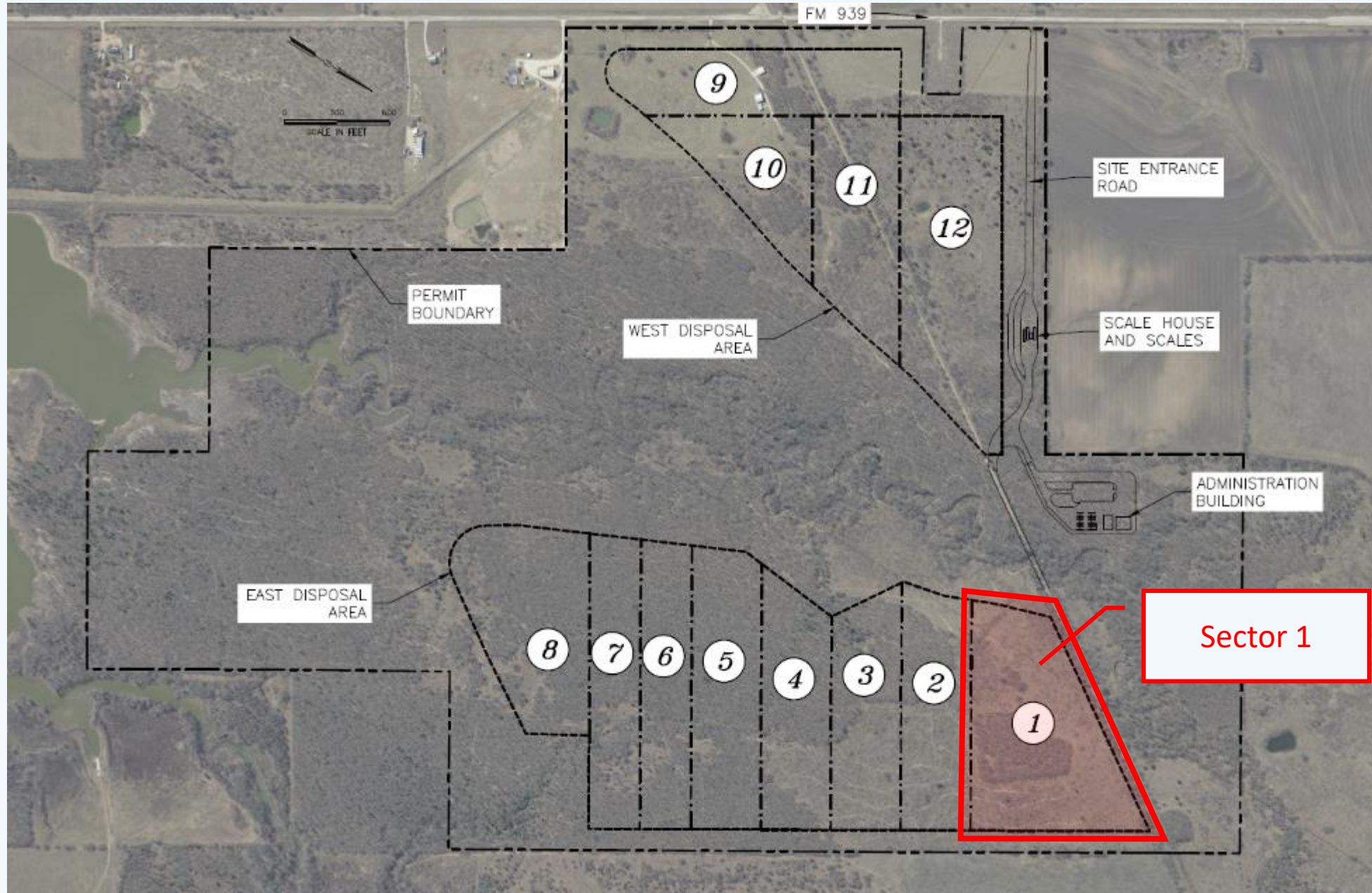


MSW 2400 Entry Road – Under Construction



- Scope: Street, Landscaping, Water, and Storm improvements
- Engineer: Walker Partners
- Contractor: Knife River - South
- Funding Source: FY 22 & 23 Bonds
- Cost: \$3,406,162

MSW 2400 Site Layout – Sector 1

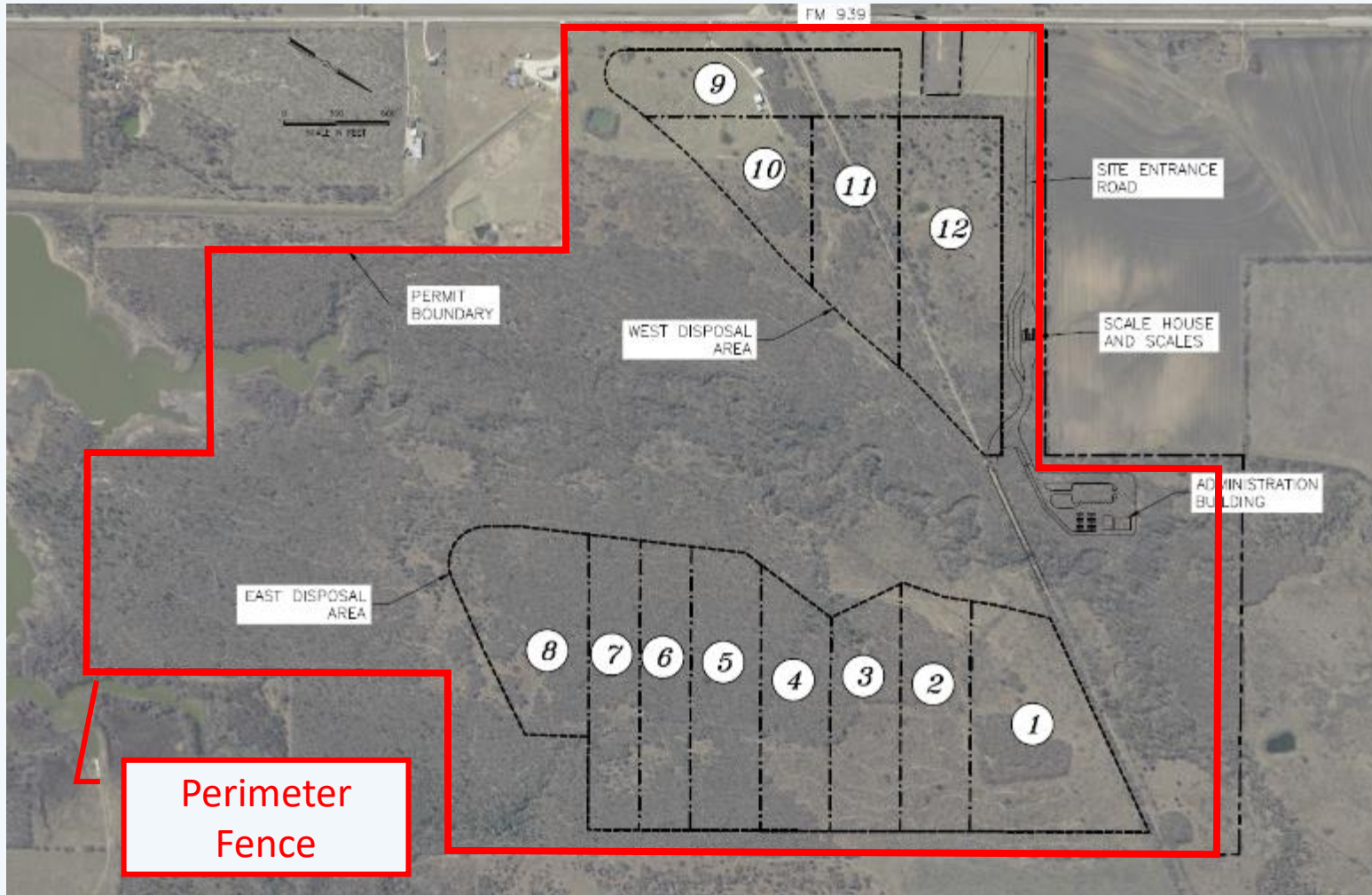


MSW 2400 Sector 1 – Under Construction



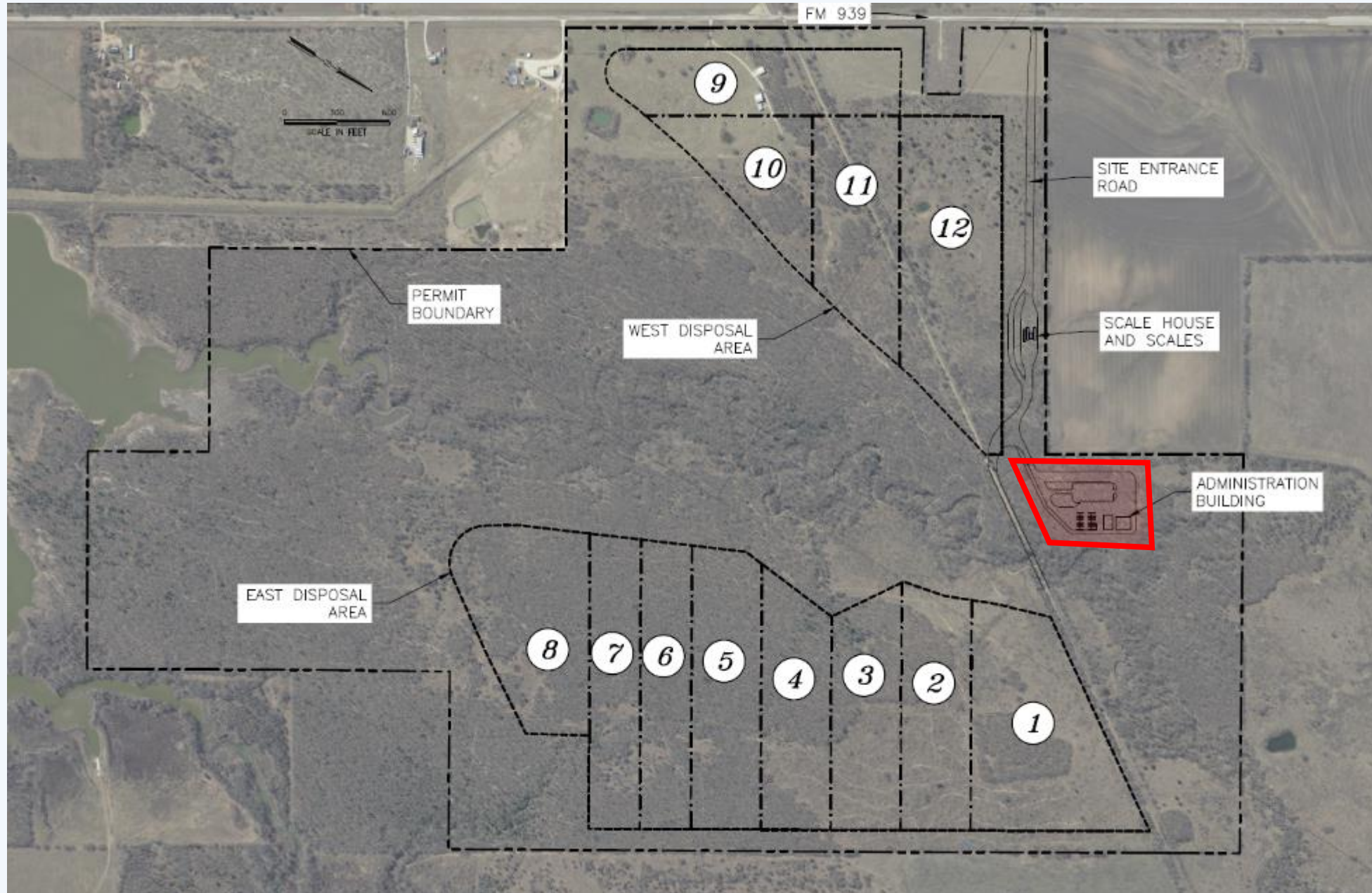
- Scope: Excavation, Landfill Liner, and additional infrastructure
- Engineer: SCS Engineers
- Contractor: Hammett Excavation
- Funding Source: FY 23 & 24 Bonds
- Cost: \$8,131,401

MSW 2400 Perimeter Fence – Under Construction



- Scope: Installation of 19,000 linear feet of fencing including chain link, barbed wire, game, privacy, and pipe fencing
- Engineer: SCS Engineers
- Contractor: Delta Specialty Contractors
- Funding Source: FY 24 Bonds
- Cost: \$737,604

MSW 2400 Site Layout – Maintenance Building

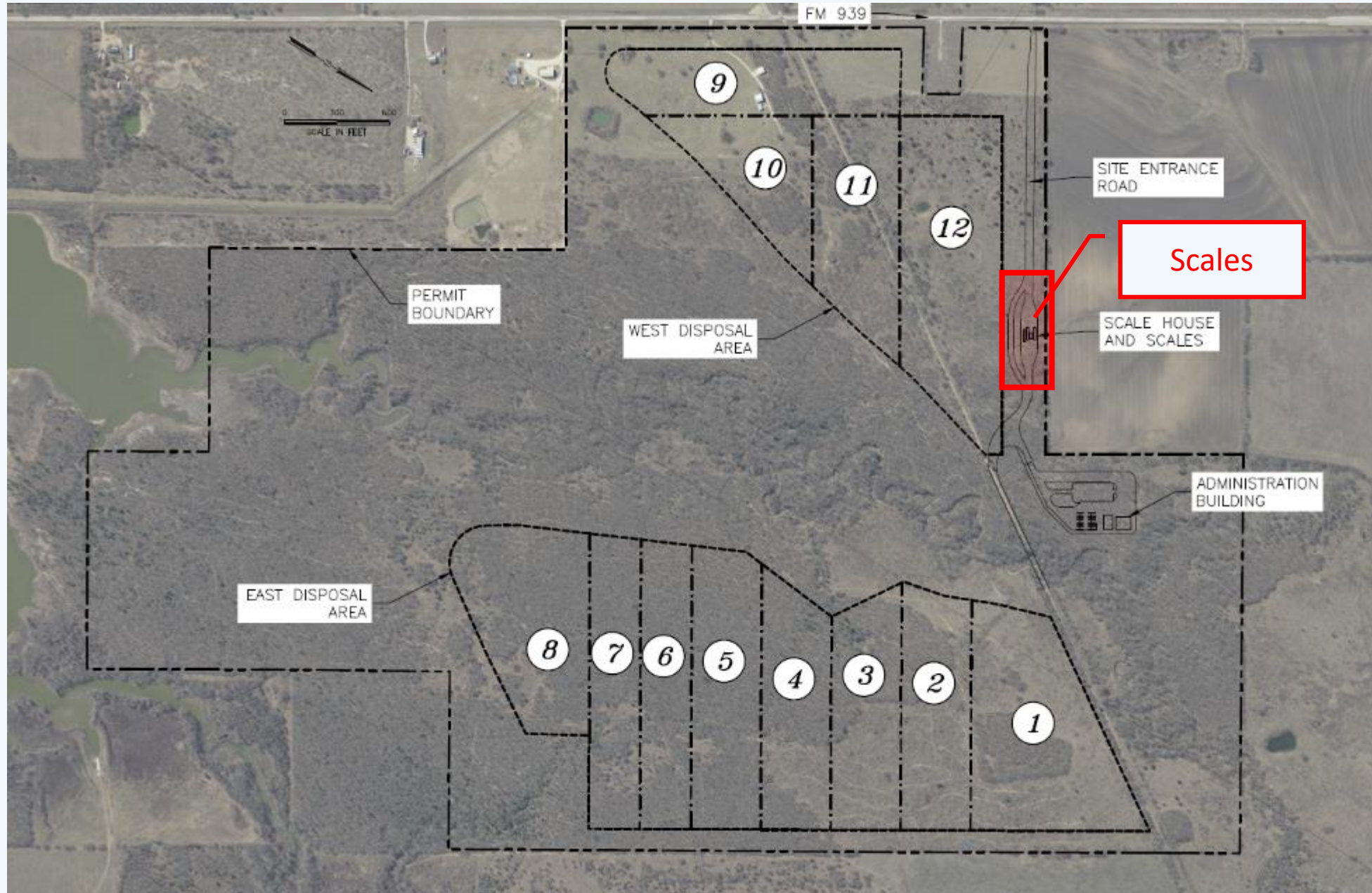


MSW 2400 Maintenance Building – Bidding

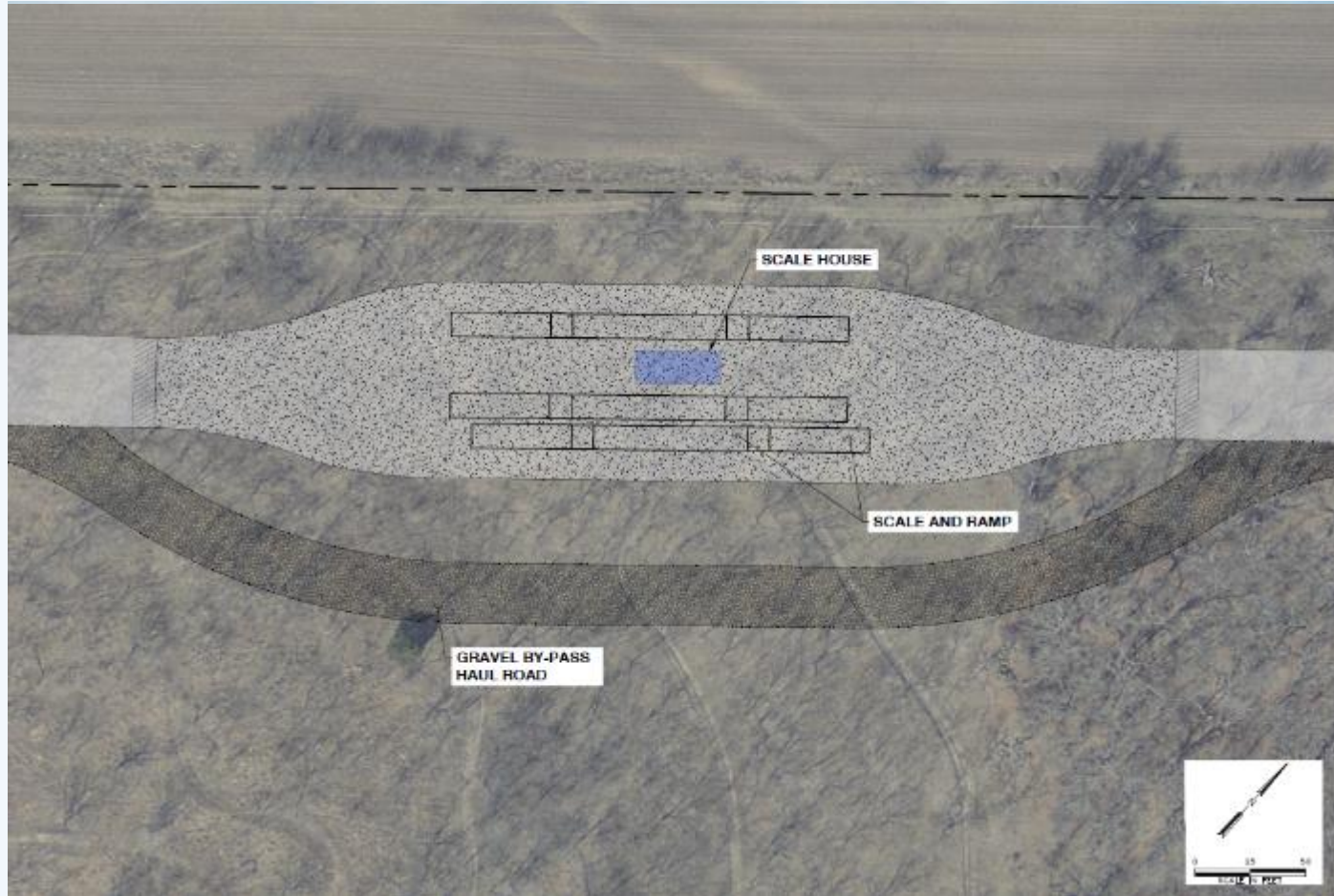


- Scope: Constructing a maintenance building, concrete slab for modular office building, and a citizens collection station.
- Engineer: Walker Partners
- Contractor: To Be Determined
- Funding Source: FY 24 Bonds
- Cost: \$3,300,000 Engineer's Estimate

MSW 2400 Site Layout – Scales

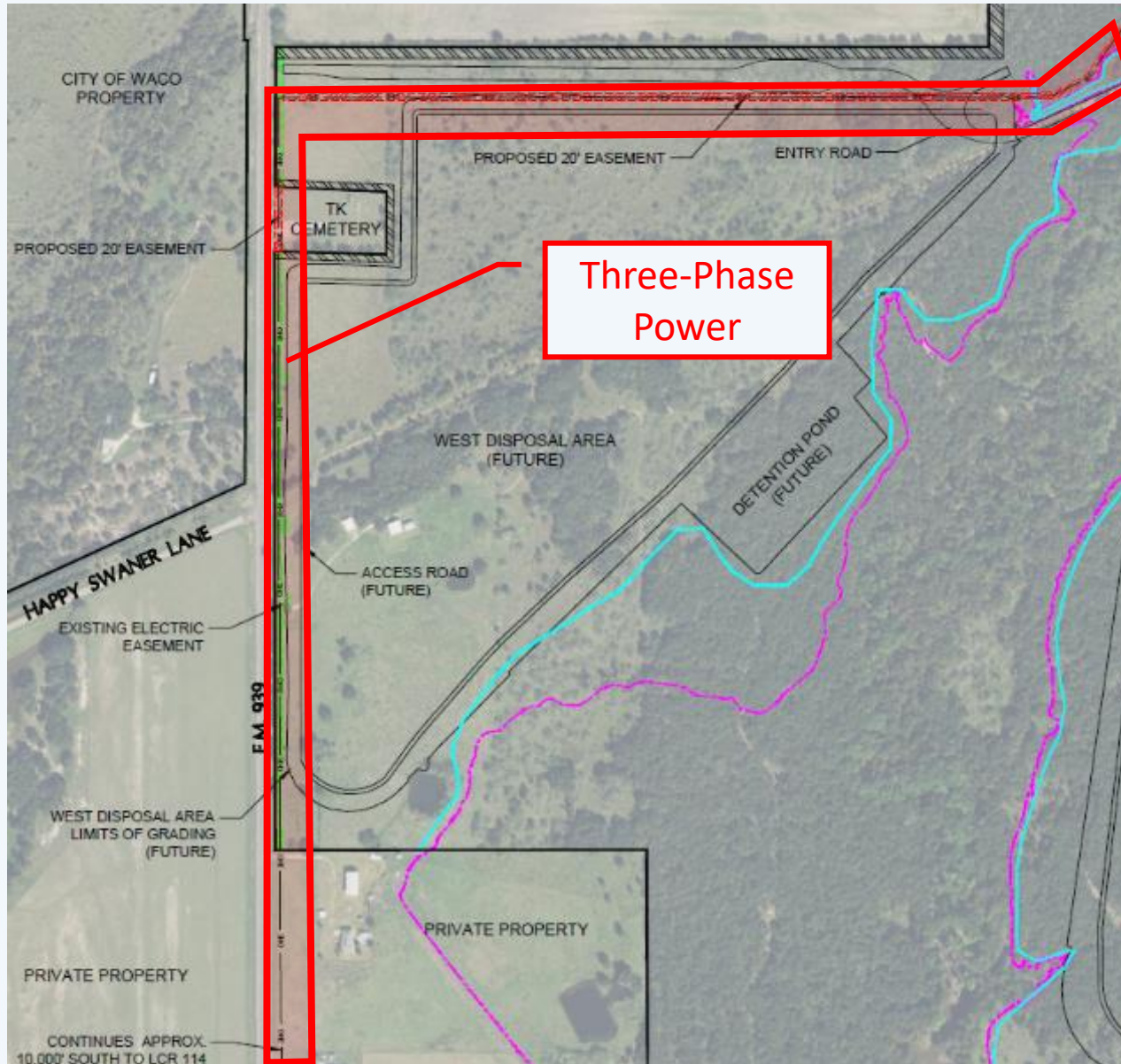


MSW 2400 Scales – Bidding



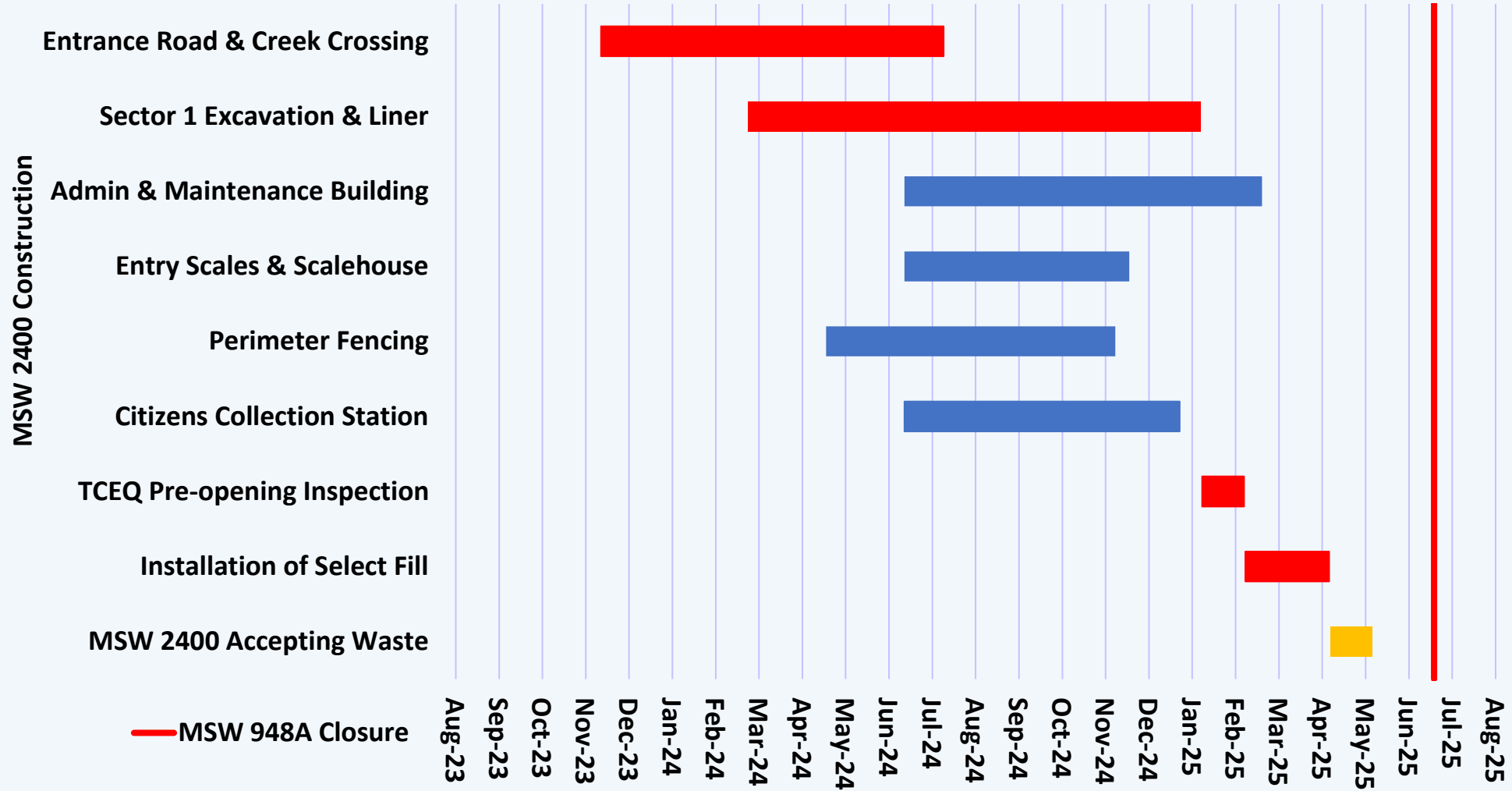
- Scope: Installing truck scales
- Engineer: SCS Engineers
- Contractor: To Be Determined
- Funding Source: FY 24 Bonds
- Cost: \$1,420,900.00 Engineer's Estimate

MSW 2400 NVEC – Contract



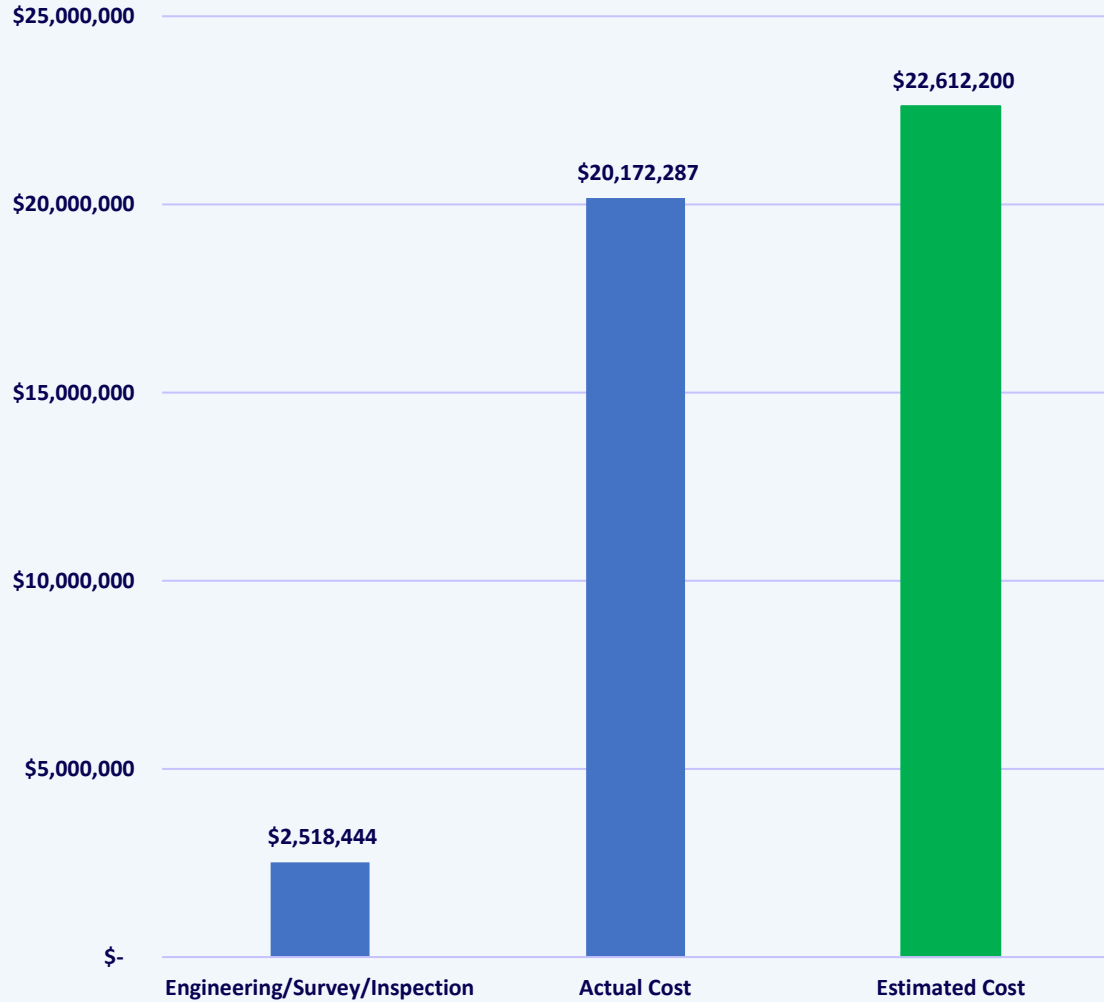
- Scope: Upgrade three-phase power along FM 939 and install new three-phase power from the entrance road into the site.
- Engineer: Walker Partners
- Contractor: Navasota Valley Electric Cooperative
- Funding Source: FY 24 Bonds
- Cost: \$459,481

MSW 2400 Schedule

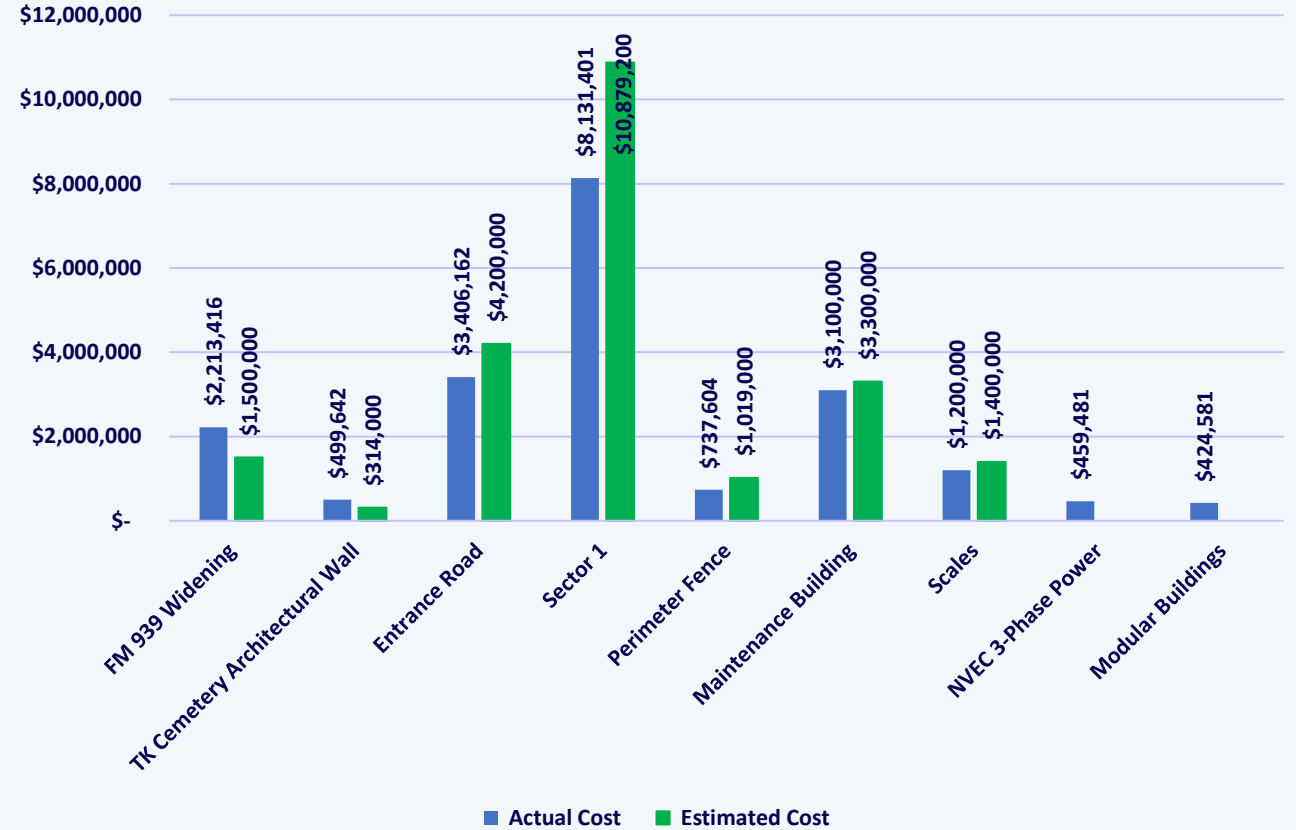


MSW 2400 Cost

Total Cost



Cost per Project



Transfer Station

Transfer Station Site Layout



Transfer Station Facility – Under Construction



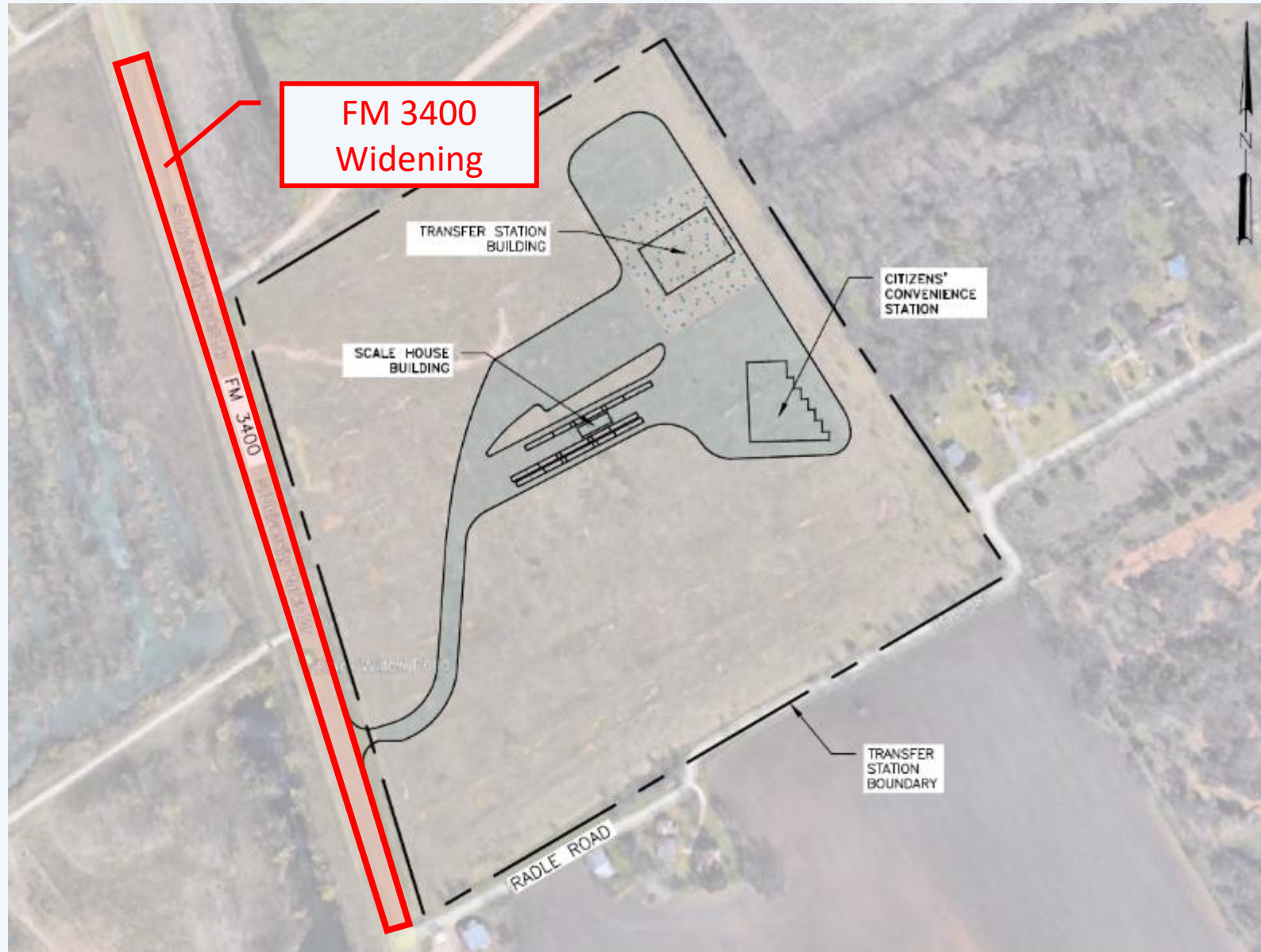
- Scope: Constructing a transfer station building, pavement, drainage structures, water and sewer utilities, and scales
- Engineer: SCS Engineers
- Contractor: Hammett Excavation
- Funding Source: FY 23 & 24 Bond
- Cost: \$13,803,847

Transfer Station Sewer – Bidding



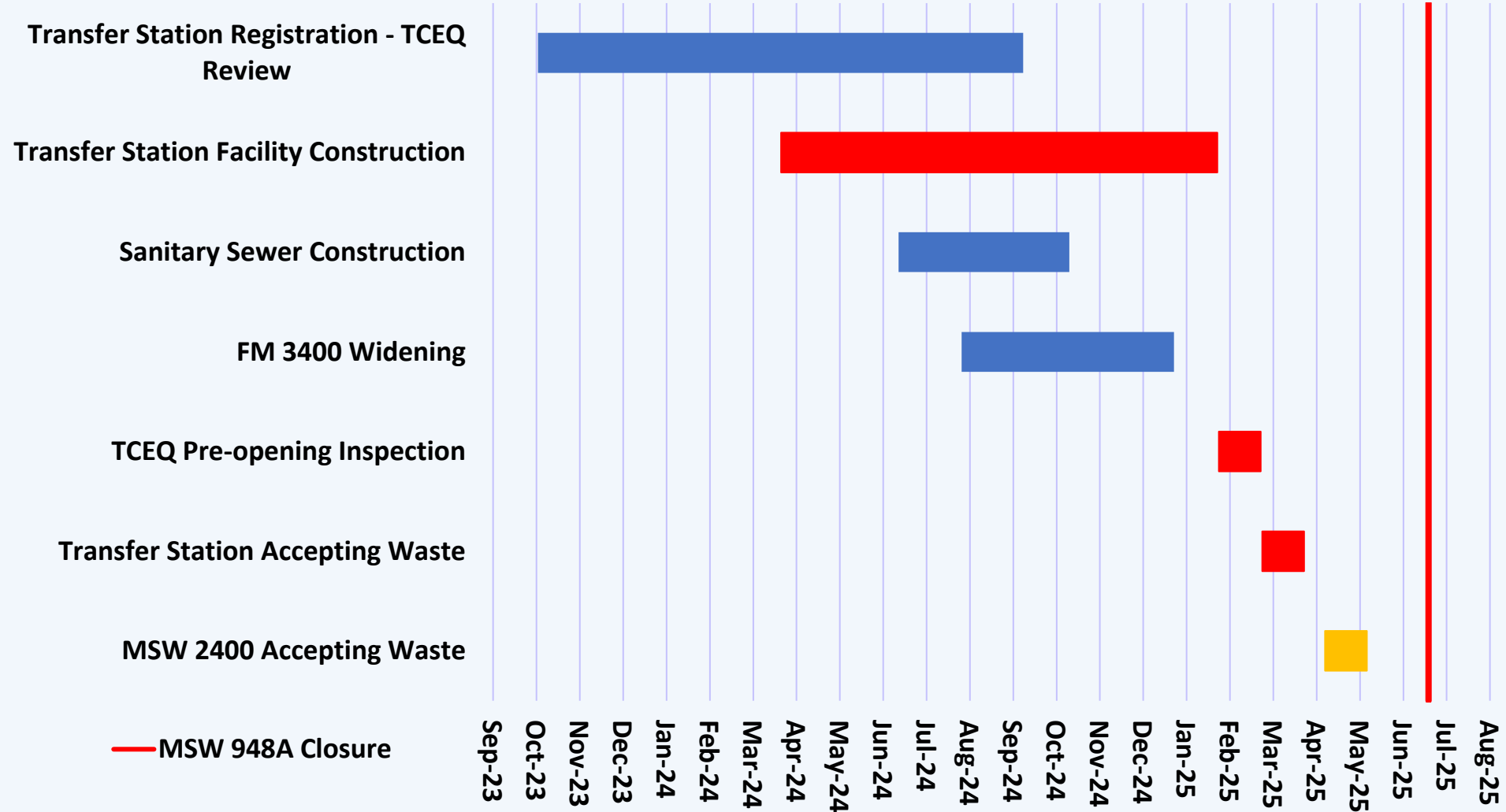
- Scope: Constructing sanitary sewer improvements
- Engineer: Walker Partners
- Contractor: Quality W Contractors
- Funding Source: FY 24 Bonds
- Cost: \$290,775

Transfer Station FM 3400 Widening – Bidding

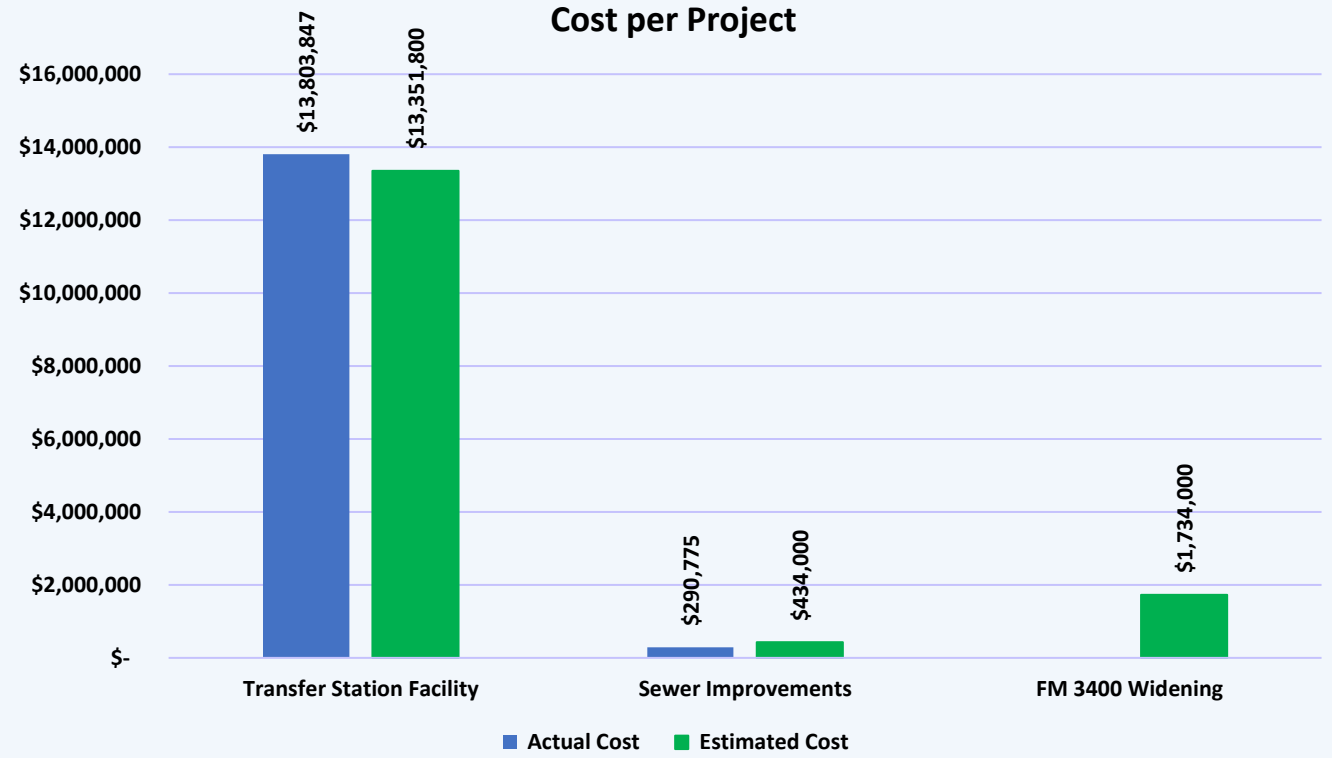
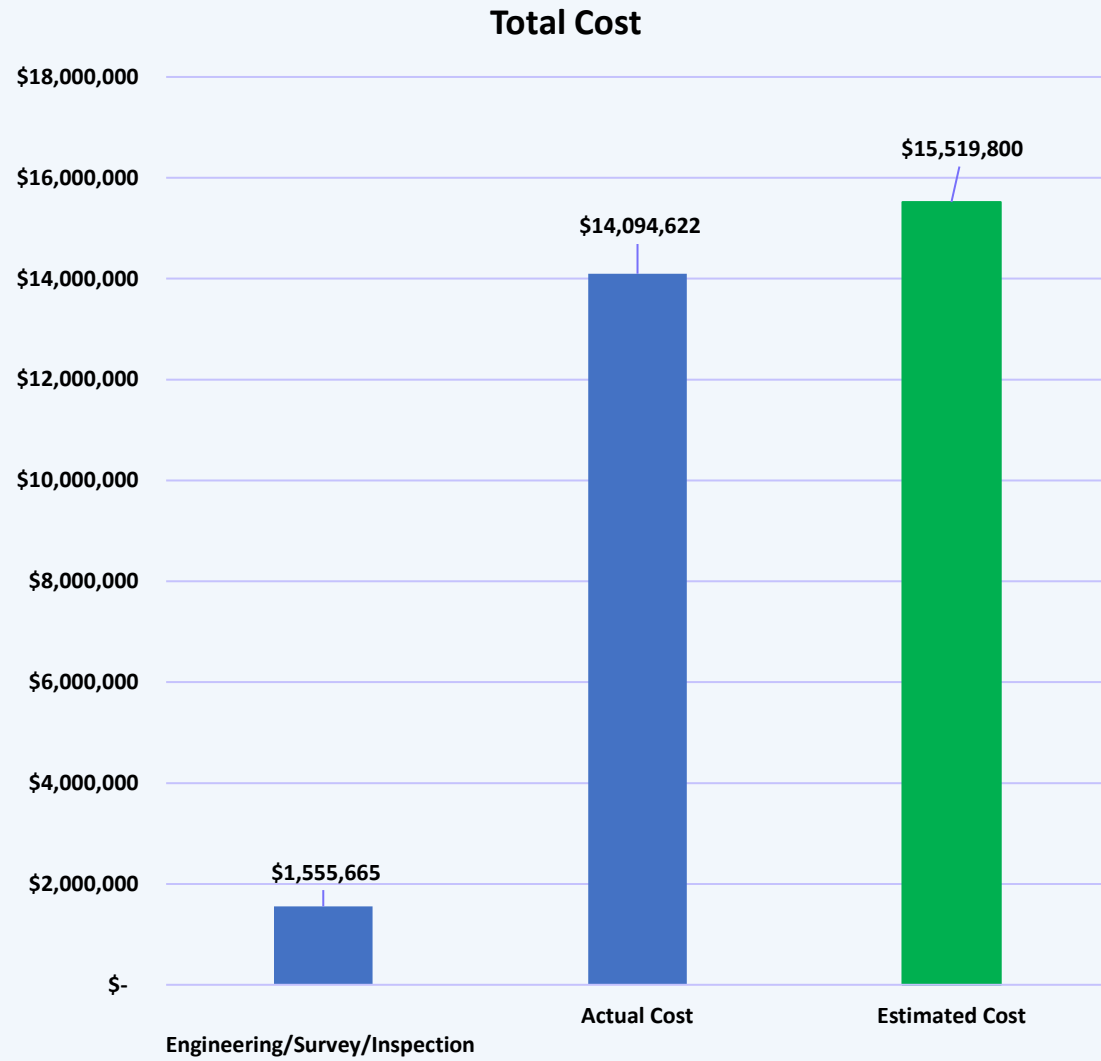


- Scope: Widening FM 3400 to add left turn lane in south bound direction
- Engineer: Walker Partners
- Contractor: To Be Determined
- Funding Source: FY 24 Bonds
- Cost: \$1,734,000 Engineers Estimate

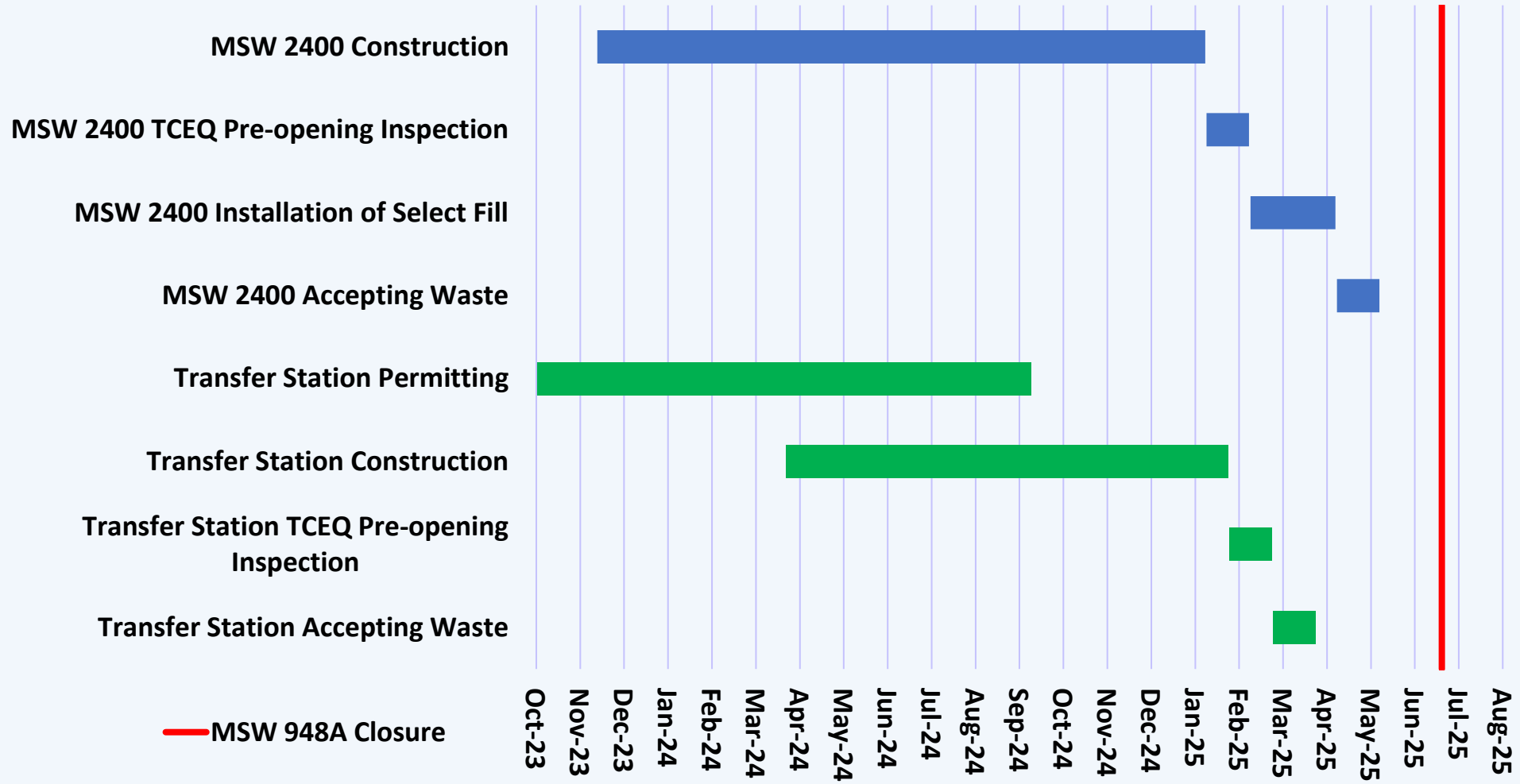
Transfer Station Schedule



Transfer Station Cost



Solid Waste Facilities Combined Schedule



Solid Waste Facilities Update

Summary

- **Cost**
 - MSW 2400 construction costs approx. \$20.2M
 - Transfer Station construction costs approx. \$17.8M
- **Timing**
 - MSW 2400 opening April/May 2025
 - Transfer Station opening March/April 2025
 - MSW 948A reaching capacity July 2025 (possibly later with reduced activity)
- **Future Updates**
 - Progress update November 2024